

POZ Minerals

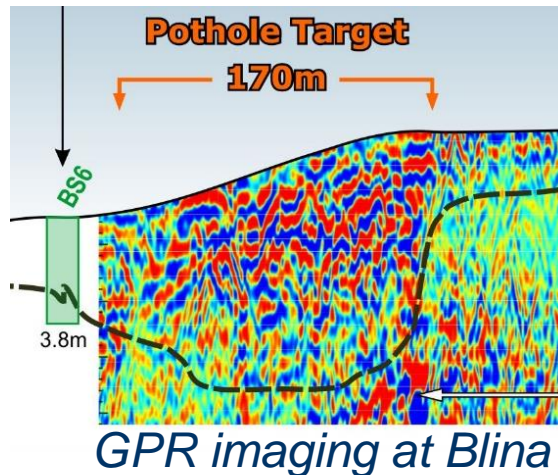
Australia's Next Diamond Producer



Blina Diamond Project, West Kimberley, WA:
Targeting high grade diamond production from proven alluvial channels using new Ground Penetrating Radar technology



ASX Code: POZ



Terrace 5 diamonds from what is now POZ ground

AGM
26 October 2017

This presentation is an overview of the Company prepared with good intention. It is not a prospectus and offers no securities for subscription or sale in any jurisdiction, nor a securities recommendation. All information necessary for investment decisions is not contained herein and investors are encouraged to conduct their own research of POZ Minerals Limited in conjunction with legal, tax, business and financial consultation.

POZ Minerals Limited, its directors, officers, employees and agents disclaim liability for any loss or damage suffered by reliance on information contained in this report when making investment decisions. In addition, no express or implied representation or warranty is given in relation to the completeness and sufficiency of the information, opinions or beliefs contained in this document or any other written or oral information made or to be made available to any interested party or its advisors.

This presentation may refer to the intention of POZ Minerals Limited but it does in no way intend to forecast forward looking statements or future matters for the purposes of the Corporations Act or any other law. Future events are subject to risks and uncertainties, and as such results, performance and achievements may in fact differ from those referred to in this presentation.

With the exception of fraud, no liability is accepted for any loss, cost or damage suffered or incurred by the reliance on the sufficiency or completeness of the information, opinions or beliefs contained forthwith.

Research, evaluation and analysis of the business, data and property are encouraged before making financial investments. Any estimates, projections or opinions contained herein may involve subjective judgment, analysis and interpretation, and satisfaction of ones own decisions should be undertaken.

We caution you not to place undue reliance on our forward-looking statements, which speak only as of the date of this presentation, and we undertake no obligation to update this information.

The Information in this report that relates to Mineral Resources for phosphate is based on information compiled by Rick Adams and Ted Hansen who are members of the Australasian Institute of Mining and Metallurgy (AusIMM). Rick Adams and Ted Hansen are directors of Cube Consulting Pty Ltd. And have sufficient experience which is relevant to the style of mineralisation and type of deposit under consideration and to the activity which they are undertaking to qualify as a competent Person as defined in the December 2004 Edition of the "Australasian Code for Reporting of Exploration Results, Mineral Resources and Ore Reserves" (the JORC Code). Rick Adams and Ted Hansen consent to the inclusion in this report of the Information, in the form and context in which it appears.

The information in this presentation that relates to Exploration Results, Mineral Resources or Ore Reserves is based on information compiled by Mr Jim Richards who is a Member of The Australasian Institute of Mining and Metallurgy. Mr Richards is a Director of POZ. Mr Richards has sufficient experience which is relevant to the style of mineralisation and type of deposit under consideration and to the activity he is undertaking to qualify as a Competent Person as defined in the 2012 Edition of the Australasian Code for Reporting of Exploration Results, Mineral Resources and Ore Reserves. Mr Richards has consented to the inclusion in this presentation of the matters based on information in the form and context in which it appears.

The Company is not aware of any new information or data that materially affects the information included in the previous announcement (JORC 2004) and that all of the previous assumptions and technical parameters underpinning the estimates in the previous announcement have not materially changed.

Company Structure (ASX Code – POZ)

Board Of Directors



Executive Chairman
Jim Richards



**Non-Executive
Director & Company
Secretary**
Grant Mooney



**Non-Executive
Director**
Mark Thompson

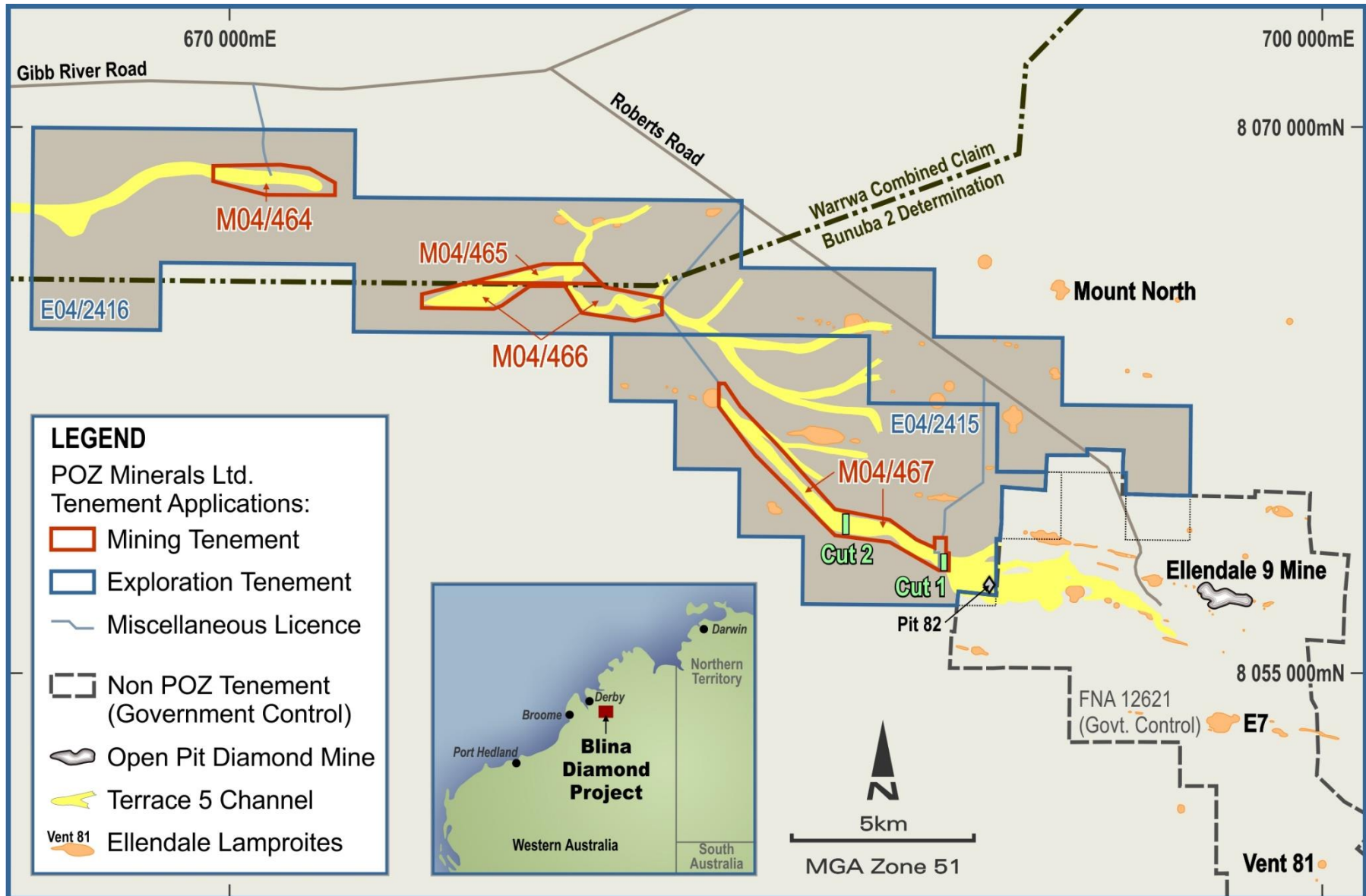
Total Shares on Issue	167,168,333
Market Capitalisation (undiluted at \$0.06 per share)	\$10.0 M
Cash on Hand (30 June 2017)	\$2.0 M

Major Shareholders	Shares	% of Capital
Jim Richards	35,016,401	20.9
Other Directors	13,134,999	7.9
Sir Ron Brierley	14,485,373	8.7
Kesli Chemicals Pty Ltd	14,066,354	8.4

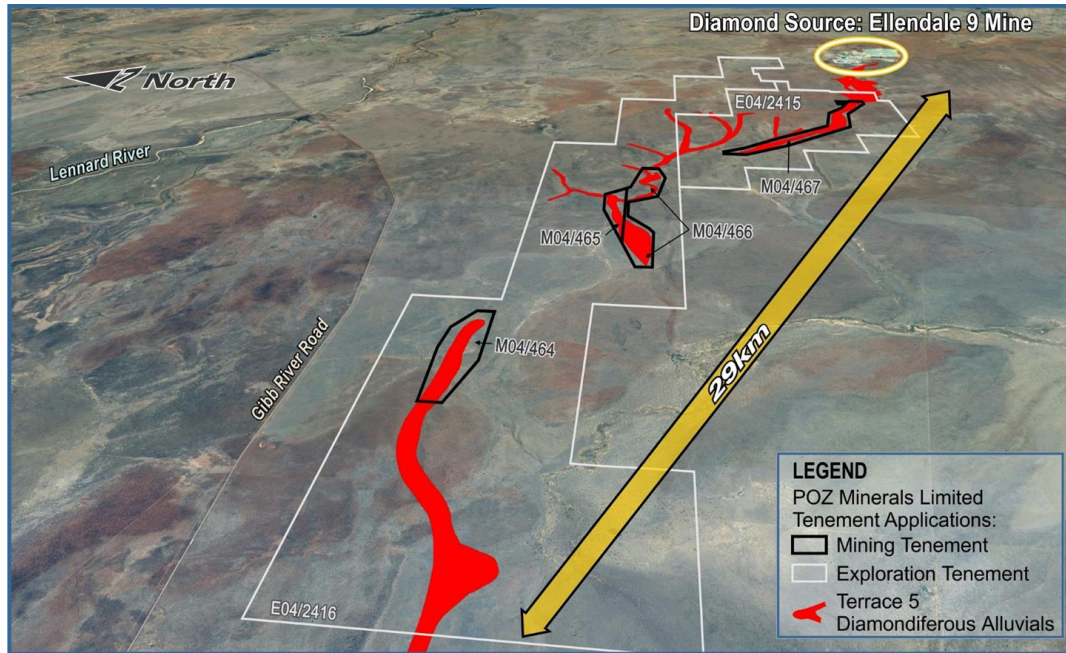
Share Price History 12 Months



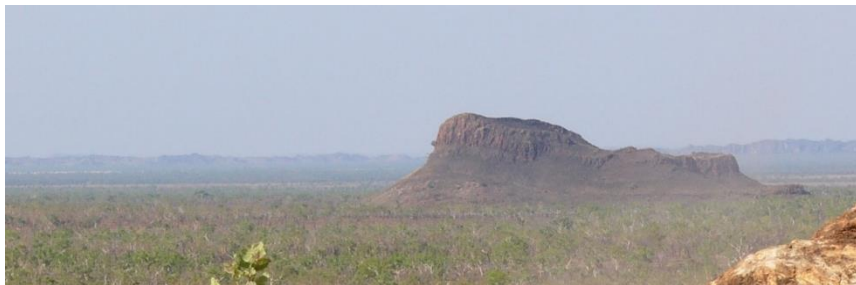
Blina Diamond Project, WA: Location



Blina Terrace 5 Project Summary



Terrace 5 channel diamonds are mainly derived from the erosion of the E9 pipe (previously mined by KDC).



Mount North lamproite pipe: indicating surrounding level of erosion since emplacement

- The Blina Diamond Project in the Ellendale Region of Western Australia is 100% owned by POZ.
- Four mining leases (two granted).
- Two exploration leases (one granted) for 167.1 km².
- 40km strike of diamondiferous Terrace 5 alluvial gravels to target.
- Historic bulk sampling which recovered fancy yellow diamonds for which the Ellendale Field is renowned.
- POZ is targeting high grade, low tonnage alluvial deposits in bedrock trap sites using a new GPR technology.
- Historic Mining Agreement secured with the Bunuba and Warrwa peoples.

Blina Terrace 5 Target Diamonds



Some of the diamonds recovered from Terrace 5 on what is now POZ mining lease M04/467. All stones are heavier than 2 carats. A significant proportion of the larger diamonds are fancy yellows

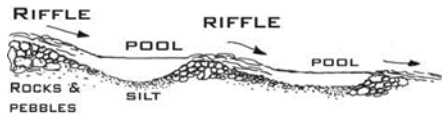


Diamonds previously mined by KDC at Ellendale. The source of the POZ Terrace 5 alluvial diamonds is mainly from the erosion of the Ellendale E9 pipe, which previously produced 50% of the world's supply of Fancy Yellow diamonds

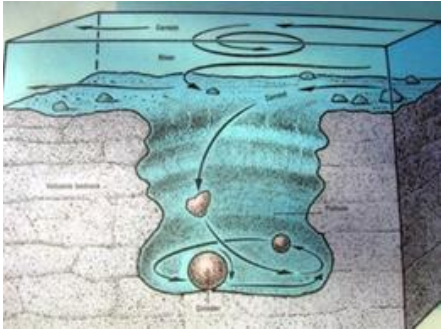
Diamonds recovered from Terrace 5, Pit 82 (on what is now POZ ground). The 8.4 carat Fancy Yellow in the upper photo is also shown below right (different orientation)



The Target: Bonanza Diamond Trap Sites



Pool and riffle complexes



How potholes form and concentrate diamonds



A boulder field within a high energy river can provide trap sites for diamonds



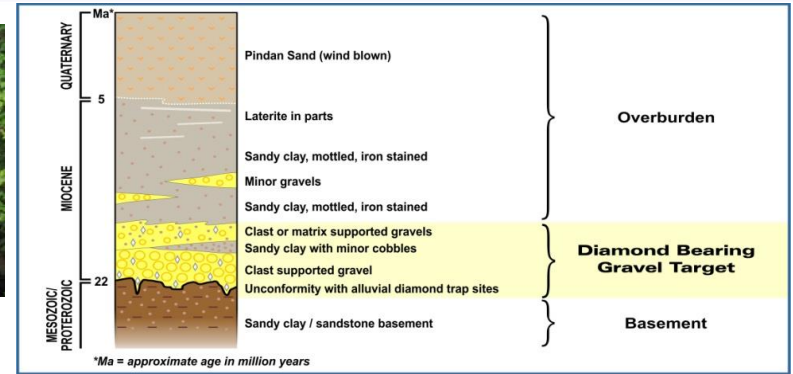
Pothole field; multiple trap sites



Pothole field; multiple trap sites



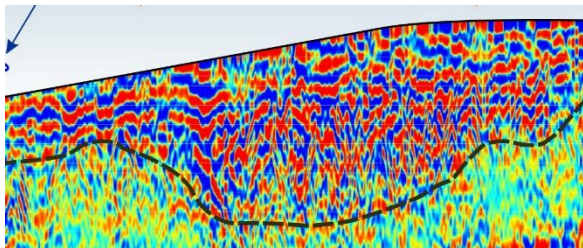
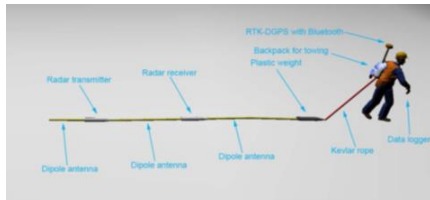
Target gravels in a pothole



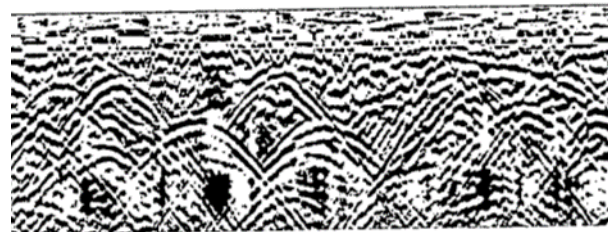
POZ Executive Chairman Jim Richards (in his younger days), mining high grade alluvial diamonds from potholes in Guyana, 1991

Gamechanger: Ground Penetrating Radar (GPR)

2017 New GPR Technology: POZ Minerals Survey

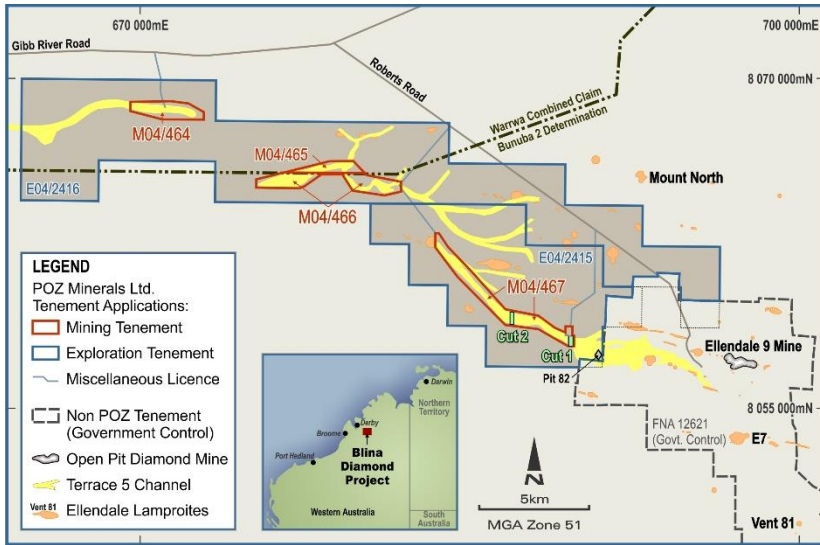


2002 Old GPR Technology: Previous Blina Survey

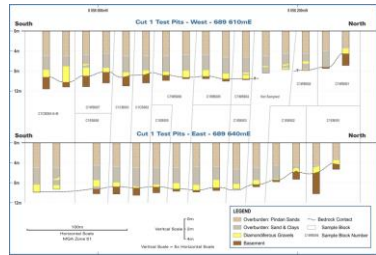
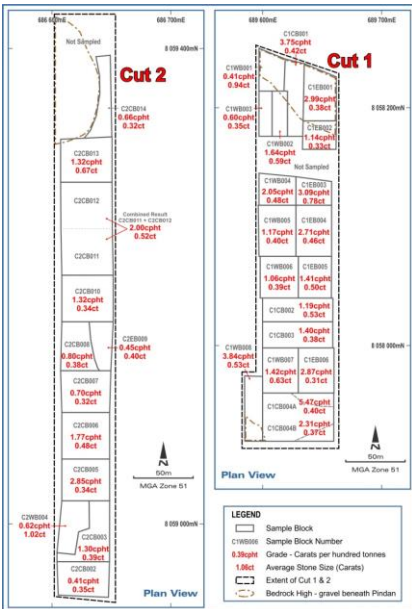


- Breakthrough GPR survey indicates untested alluvial trap sites with the potential to host high grade or bonanza grade diamond deposits within the ancient gravels. Numerous high quality targets have been generated.
- This latest GPR technology uses state of the art modern electronics to deliver a fast and inexpensive method to generate both bedrock and gravel diamond trap site targets.
- Some of this recent GPR data correlates closely with historic pitting and exploration data observations of the prospective bedrock-cover contact, which indicates the modern GPR is calibrated and operating correctly

Terrace 5 GPR: New Technology – Old Ground



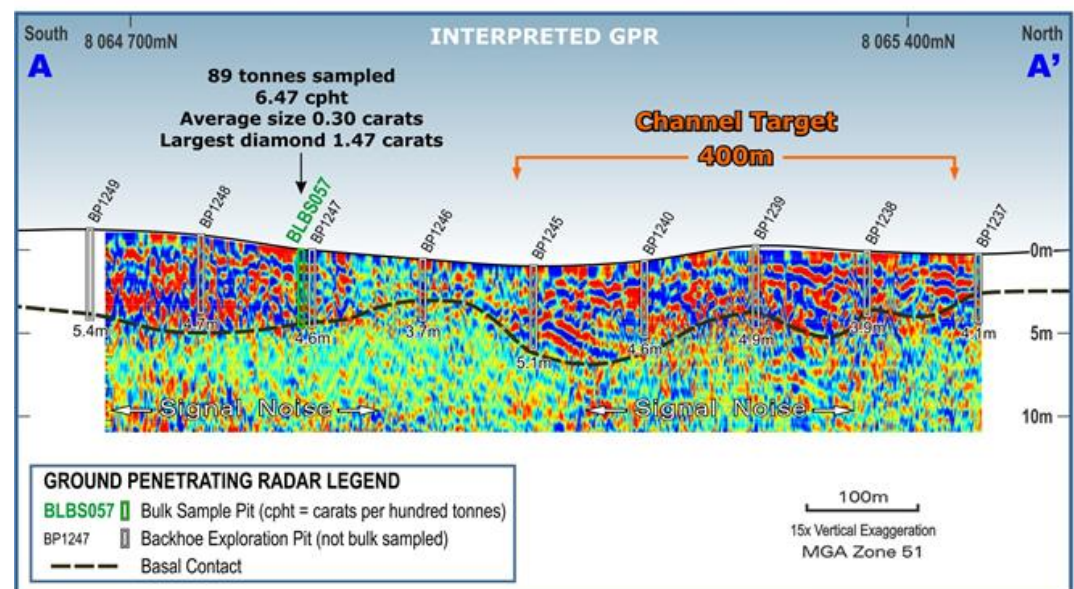
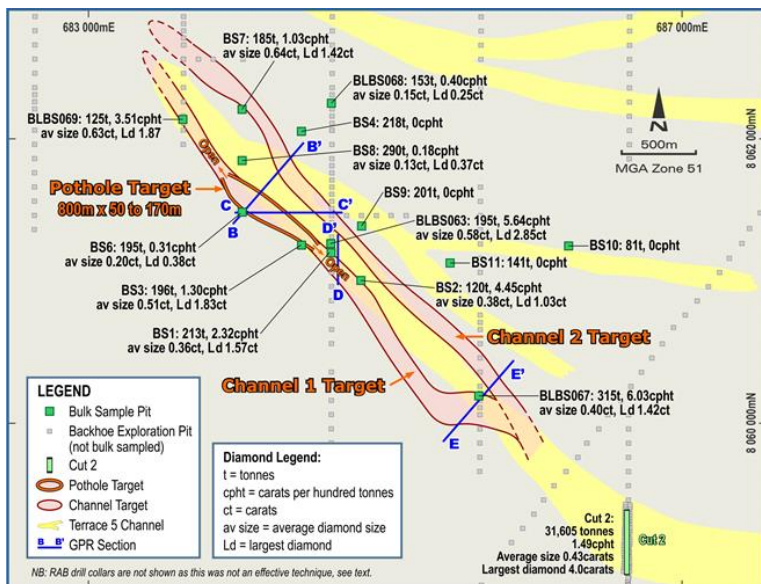
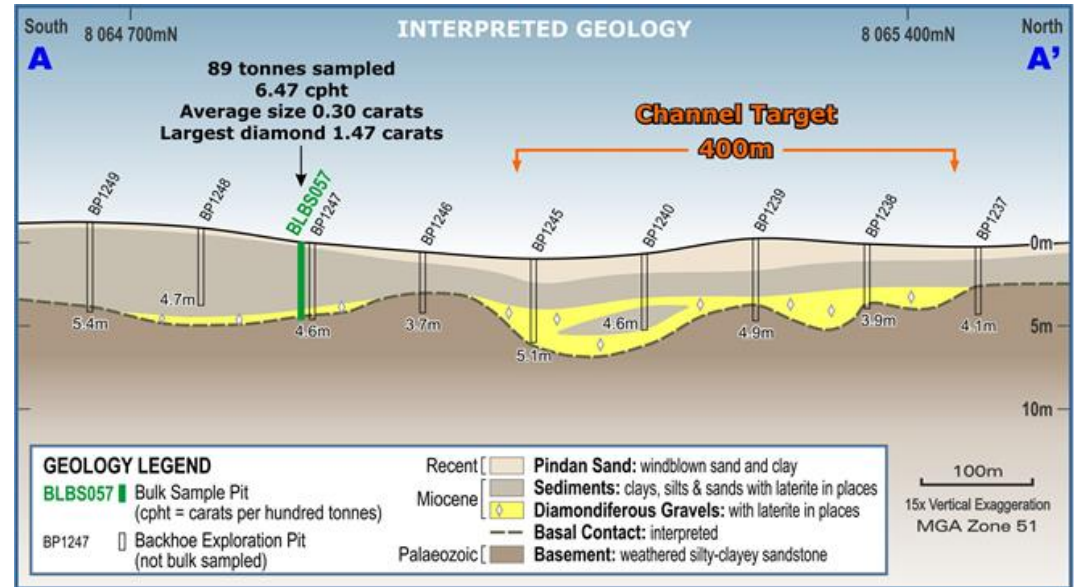
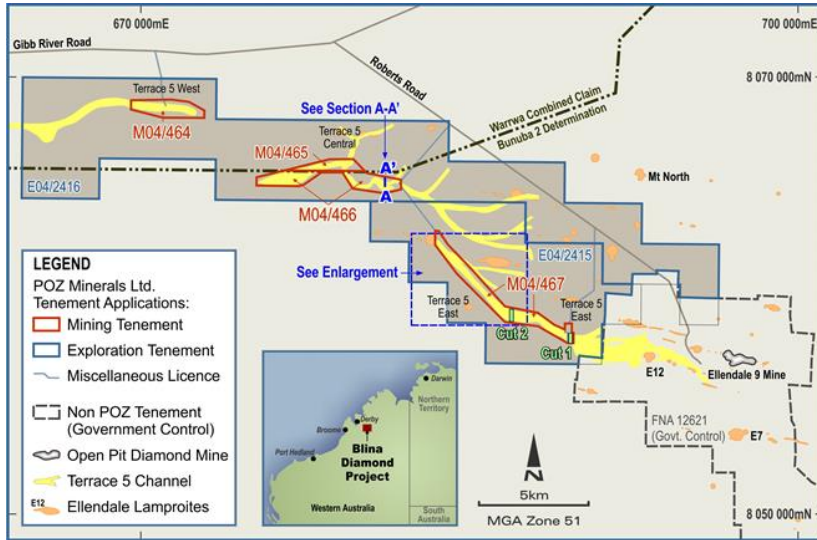
- Previous trial mining in 2005/06 at Cuts 1 and 2 recovered 1,432 carats from 40,613 cubic metres of material at a grade of 3.53 carats per hundred cubic metres.
- POZ has used the latest GPR technology to target bonanza grade trap sites in the shallowest parts of the same Terrace 5 geology and thus aims to greatly increase previous sample grades.
- Cuts 1 and 2 occur in the western part of Terrace 5 which has ~4 to 8 metres of cover above the diamondiferous gravels. POZ will target the eastern part of Terrace 5 with only 1 to 5 metres of cover, this will have a significant impact on lowering mining costs.
- '98% of the diamonds can be in only 2% of the river. My job is to find the 2%.' Jim Richards, POZ Minerals.



Results from previous sampling work at Cuts 1 and 2 indicate significant diamond mineralisation within the Terrace 5 channel

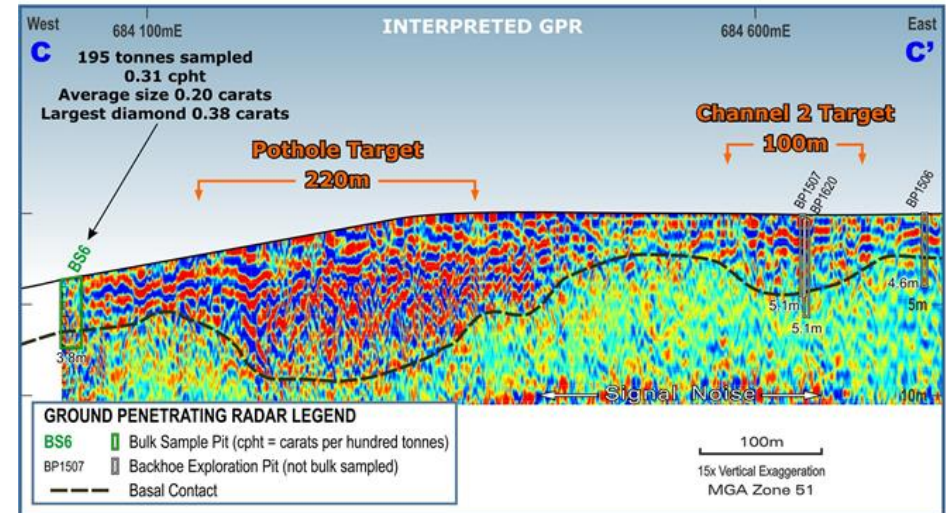
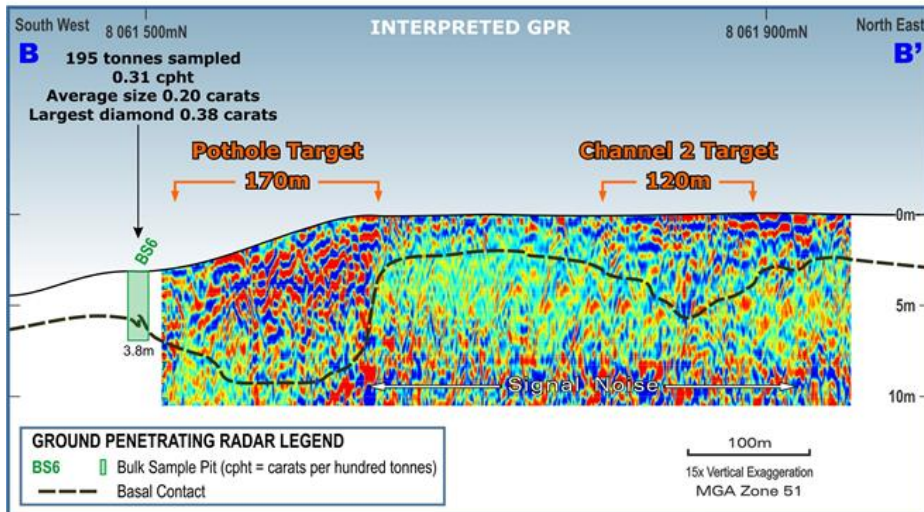
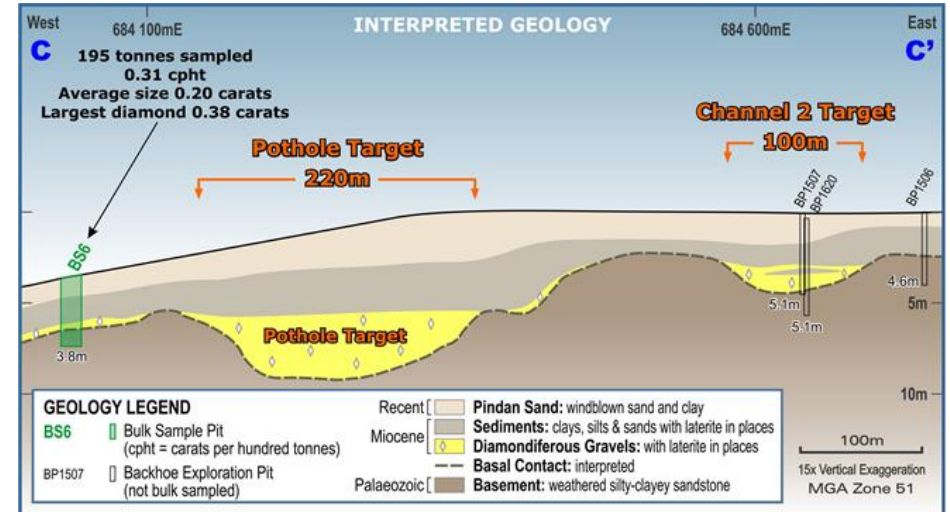
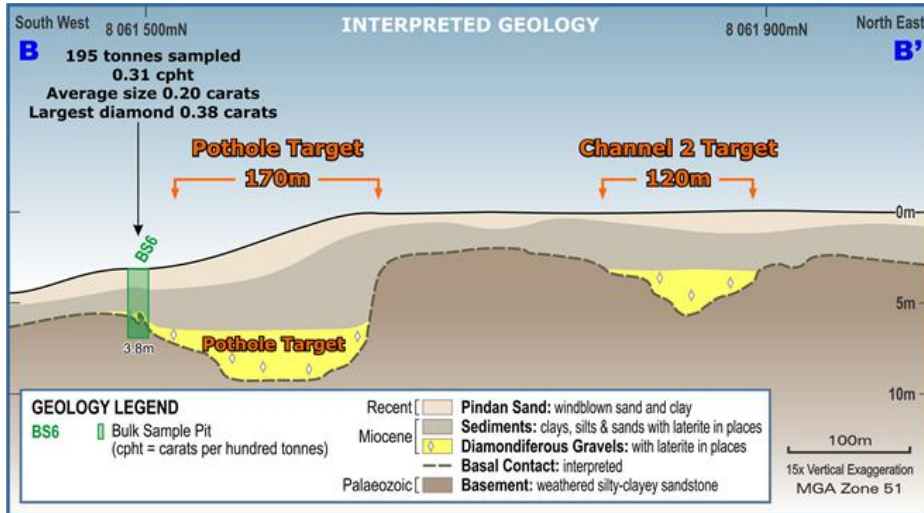
Cut	Volume (m ³)	Tonnes (t)	Size Distribution*		Number Diamonds	Total Carats	Average Size (ct)	Grade ct/100m ³	Grade ct/100t	Largest Diamond ct
			+3.35mm	- 3.35mm						
C1	22,006	40,445	676	1,698	2,363	959.2	0.41	4.36	2.37	5.92
C2	18,607	31,605	336	757	1,093	472.3	0.43	2.71	1.49	7.00
Total	40,613^A	72,050	1,012	2,455	3,456	1,432	0.42	3.53	2.00	7.00

GPR Targets: Terrace 5 Central

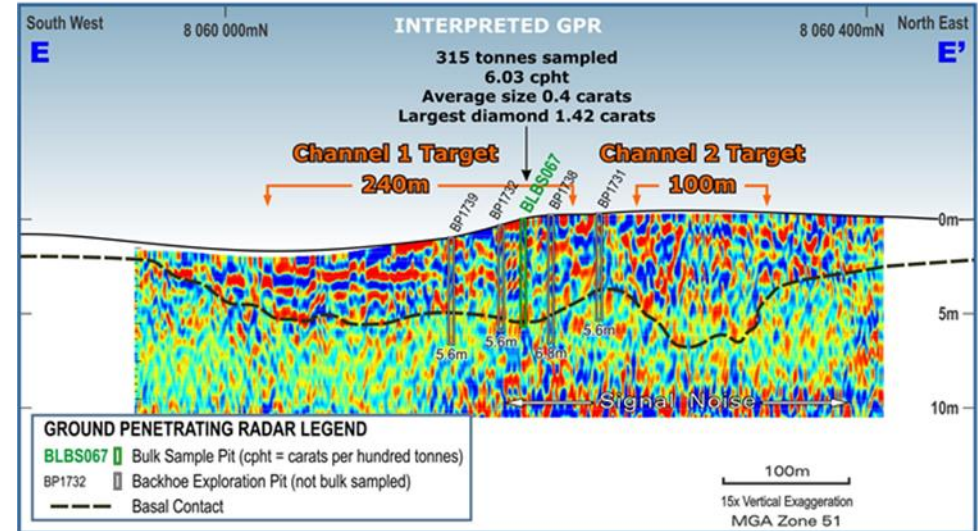
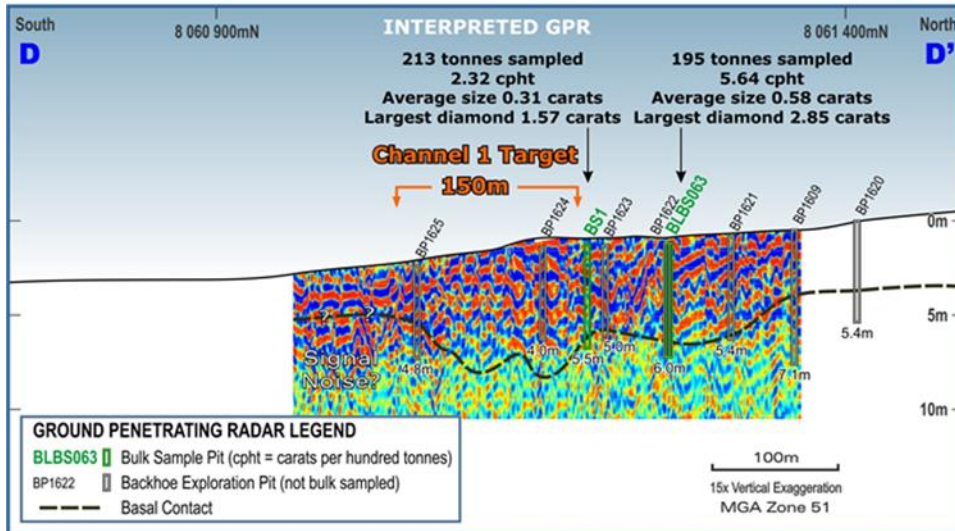
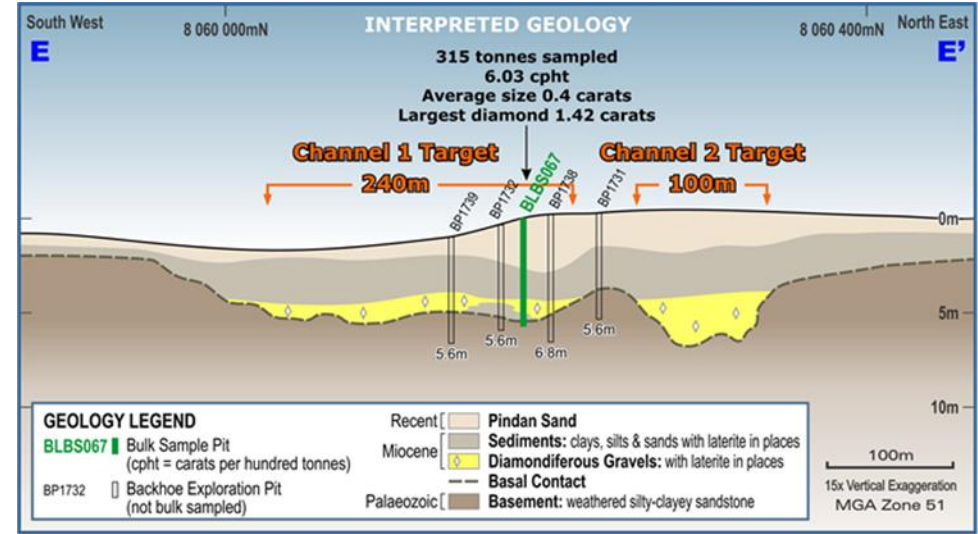
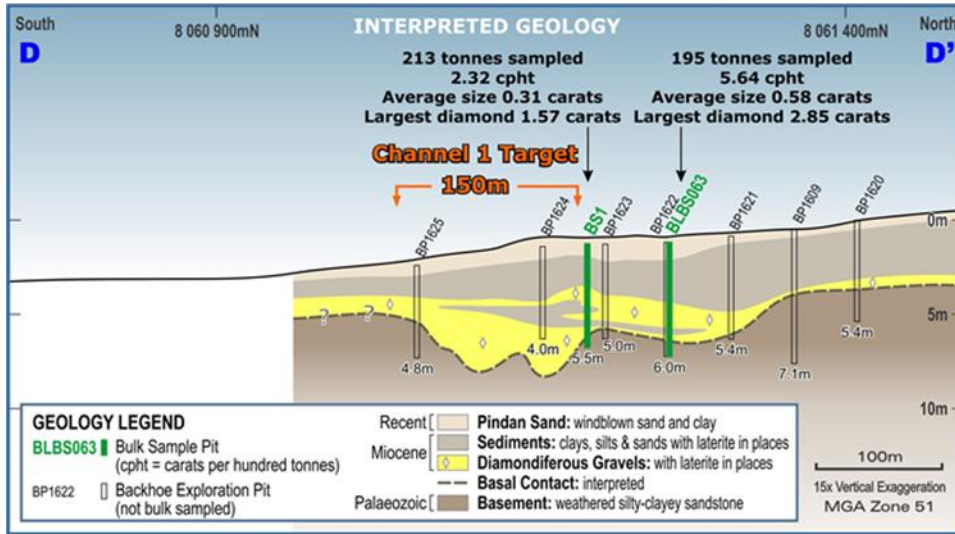


GPR Targets: Pothole & Channel 2

- When the GPR is run from a different direction over the same target (below), you get the same result
- In the best areas, GPR data correlates closely with the original pitting data of the prospective bedrock contact, which indicates the modern GPR is calibrated and working correctly.



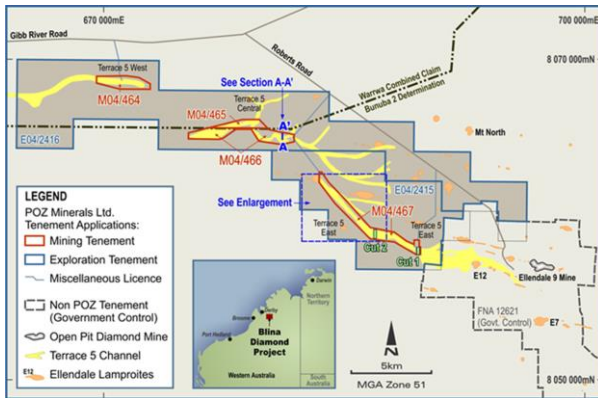
GPR Targets: Channels 1 & 2





- POZ has secured a full Mining Agreement with the Bunuba Dawangarri Aboriginal Corporation ('Bunuba'), the Traditional Owners for the southern part of the Blina Diamond Project area.

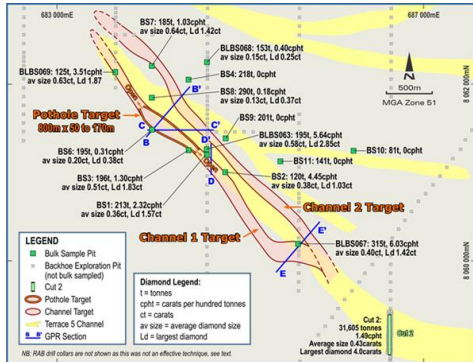
- This historic Mining Agreement has allowed the grant (on 13 October 2017) of Mining leases M04/466 and M04/467 which are the two key licenses at the heart of developing the Blina Diamond Project.



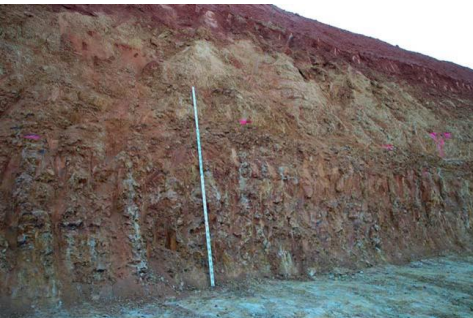
- Terms of the agreement include employment and training, profit share, share options and an earthmoving contract

- The northerly two mining lease applications (M04/464 and M04/465) fall within the Warrwa Combined Native Title Claim. Negotiations with the Warrwa group have also been successful and the grant of these two leases is imminent.





Terrace 5, Cut 1 being mined in 2005



3.5 metre thick gravel at Cut 1

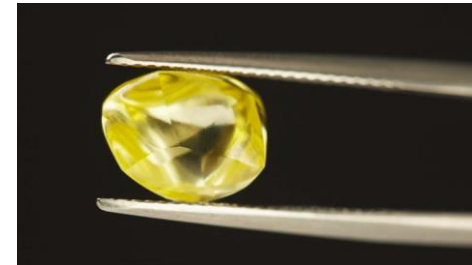


Blina Diamonds 50 tonne per hour plant at Terrace 5

- 2018 Terrace 5 bulk sampling and trial mining operations will be similar to Blina Diamonds operations in 2005/06. The main difference is POZ will target the easterly areas which have shallower overburden and with the best GPR-generated alluvial trapsites.
- Set up 50,000 tonnes per annum alluvial treatment plant close to sampling/trial mining operations.
- Start systematic bulk sampling operations of priority targets.
- Commence trial mining operations on best and most consistent grades.
- Conduct diamond sales should commercial production be achieved.

Current to April 2018

- Produce a Terrace 5 diamond report on stone size distributions and valuations.
- Generate a JORC Exploration Target for the Terrace 5 gravels.
- Fauna and flora survey. This has already been commissioned and is underway.
- Further GPR survey(s) for better alluvial trap site target resolution.
- Conduct a heritage clearance survey with Traditional Owners.
- Liaison with other stakeholder and government groups - ongoing.
- Permitting for bulk sampling and trial mining operations in 2018.
- Hiring of personnel.
- Establish security protocols and procedures for diamond handling.



May 2018 to December 2018

- Set up a project camp with ablutions and other facilities.
- Set up an alluvial treatment plant close to mining operations.
- Start systematic bulk sampling operations of priority targets.
- Commence trial mining operations on best and most consistent grades.
- Conduct diamond sales.





POZ Minerals Limited (ASX: POZ)

Australia's Next Diamond Producer



Contact Details:

Jim Richards – Executive Chairman +61 8 9422 9503

16 Ord Street, West Perth, WA 6005

Email – info@pozminerals.com.au

www.pozminerals.com.au