



Phosphate Australia Limited

Annual General Meeting 2015



ASX Code: POZ

3 November 2015

This presentation is an overview of the Company prepared with good intention. It is not a prospectus and offers no securities for subscription or sale in any jurisdiction, nor a securities recommendation. All information necessary for investment decisions is not contained herein and investors are encouraged to conduct their own research of Phosphate Australia Limited in conjunction with legal, tax, business and financial consultation.

Phosphate Australia Limited, its directors, officers, employees and agents disclaim liability for any loss or damage suffered by reliance on information contained in this report when making investment decisions. In addition, no express or implied representation or warranty is given in relation to the completeness and sufficiency of the information, opinions or beliefs contained in this document or any other written or oral information made or to be made available to any interested party or its advisors.

This presentation may refer to the intention of Phosphate Australia Limited but it does in no way intend to forecast forward looking statements or future matters for the purposes of the Corporations Act or any other law. Future events are subject to risks and uncertainties, and as such results, performance and achievements may in fact differ from those referred to in this presentation.

With the exception of fraud, no liability is accepted for any loss, cost or damage suffered or incurred by the reliance on the sufficiency or completeness of the information, opinions or beliefs contained forthwith.

Research, evaluation and analysis of the business, data and property are encouraged before making financial investments. Any estimates, projections or opinions contained herein may involve subjective judgment, analysis and interpretation, and satisfaction of ones own decisions should be undertaken.

We caution you not to place undue reliance on our forward-looking statements, which speak only as of the date of this presentation, and we undertake no obligation to update this information.

The Information in this report that relates to Mineral Resources is based on information compiled by Rick Adams and Ted Hansen who are members of the Australasian Institute of Mining and Metallurgy (AusIMM). Rick Adams and Ted Hansen are directors of Cube Consulting Pty Ltd. And have sufficient experience which is relevant to the style of mineralisation and type of deposit under consideration and to the activity which they are undertaking to qualify as a competent Person as defined in the December 2004 Edition of the “Australasian Code for Reporting of Exploration Results, Mineral Resources and Ore Reserves” (the JORC Code). Rick Adams and Ted Hansen consent to the inclusion in this report of the Information, in the form and context in which it appears.

The information in this presentation that relates to Exploration Results, Mineral Resources or Ore Reserves is based on information compiled by Mr Jim Richards who is a Member of The Australasian Institute of Mining and Metallurgy. Mr Richards is a Director of POZ. Mr Richards has sufficient experience which is relevant to the style of mineralisation and type of deposit under consideration and to the activity he is undertaking to qualify as a Competent Person as defined in the 2012 Edition of the Australasian Code for Reporting of Exploration Results, Mineral Resources and Ore Reserves. Mr Richards has consented to the inclusion in this presentation of the matters based on information in the form and context in which it appears.

The Company is not aware of any new information or data that materially affects the information included in the previous announcement (JORC 2004) and that all of the previous assumptions and technical parameters underpinning the estimates in the previous announcement have not materially changed.



Phosphate Australia Limited (ASX:POZ) is an Australian focused multi-commodity resources company.

It has been listed on the ASX since 2008. The Company owns various mineral projects in the Northern Territory and Western Australia.



Northern Territory
Highland Plains Phosphate
Nicholson Iron

Western Australia
Blina Diamonds
Horse Well Gold
Laverton Gold
Musgraves Cu-Ni-PGE

Board Of Directors



Executive Chairman
Jim Richards



**Non-Executive
Director & Company
Secretary**
Grant Mooney

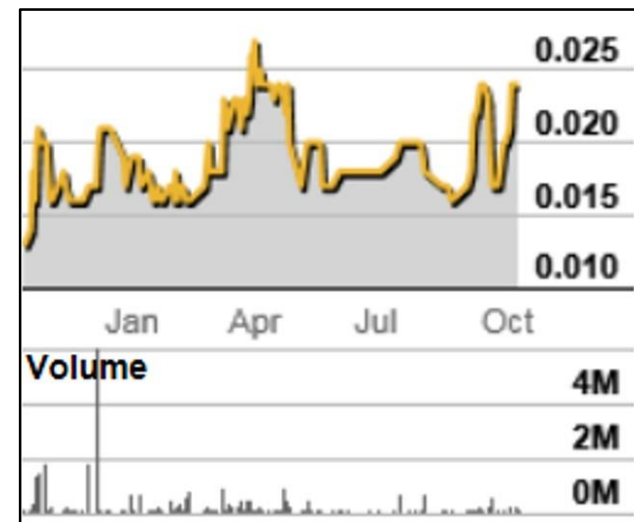


**Non-Executive
Director**
Mark Thompson

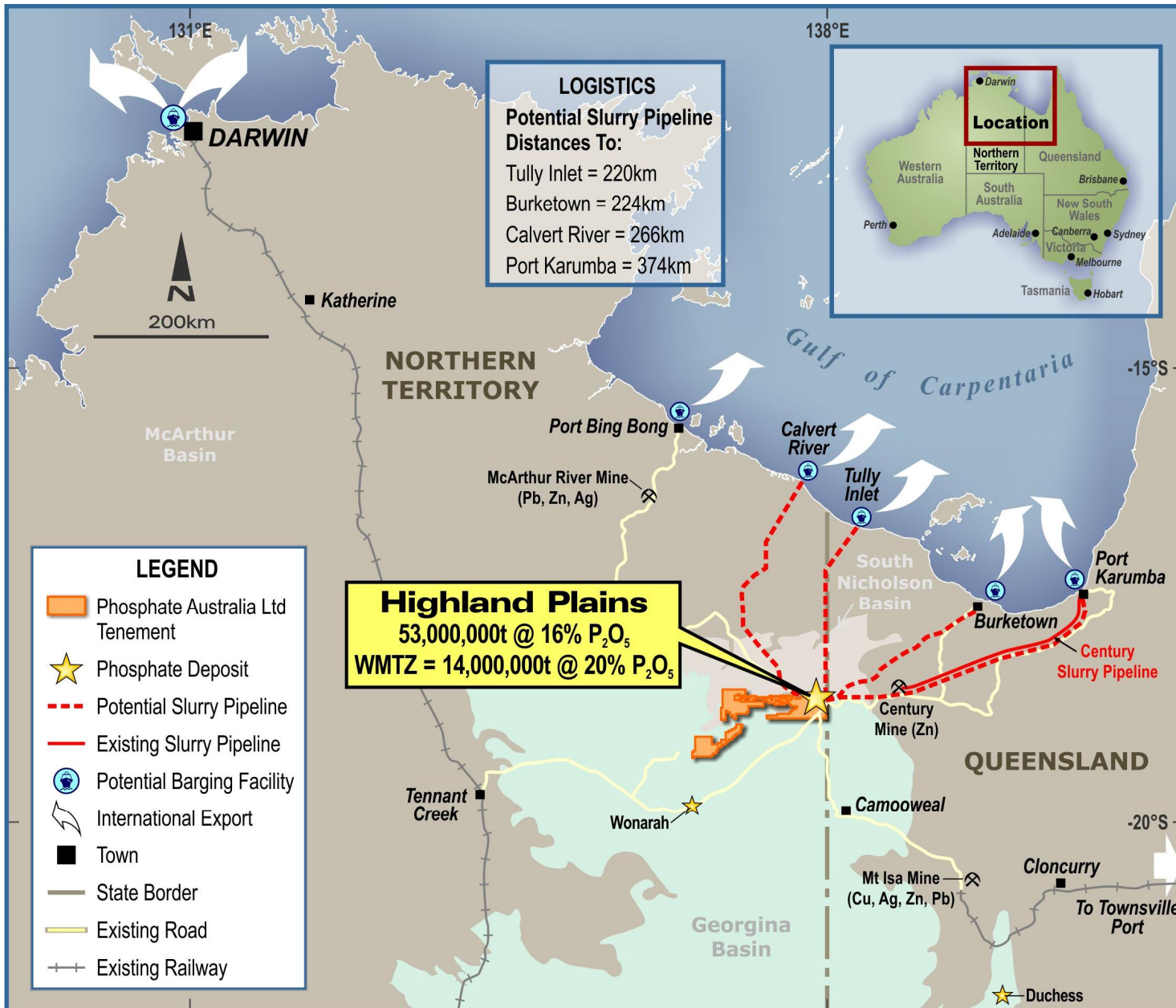
Total Shares on Issue	161,168,333
Market Capitalisation (undiluted at \$0.019 per share)	\$3.0 M
Cash on Hand (30 June 2015)	\$3.6 M

Major Shareholders	Shares	% of Capital
Directors	43,323,076	27.0
Kesli Chemicals Pty Ltd	16,629,676	10.3
Sir Ron Brierley	14,485,373	9.0

Share Price History 12 Months



Highland Plains – Phosphate Project NT



“ POZ Flagship Project at Highland Plains in the NT is Australia’s closest phosphate deposit to coast and Asian markets

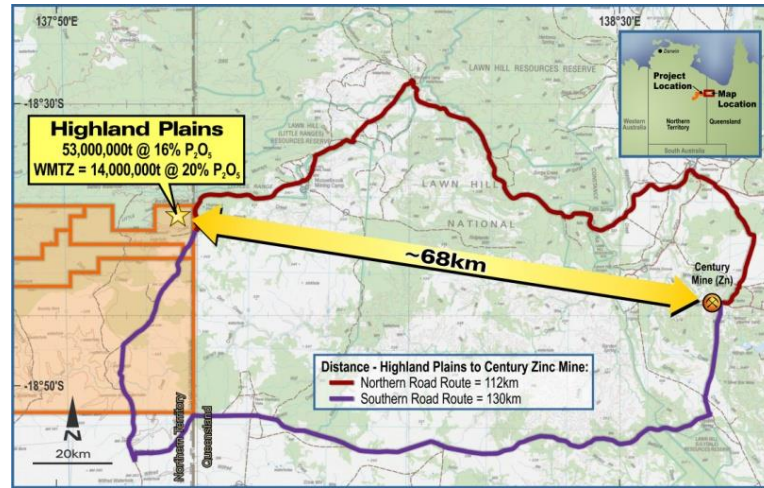
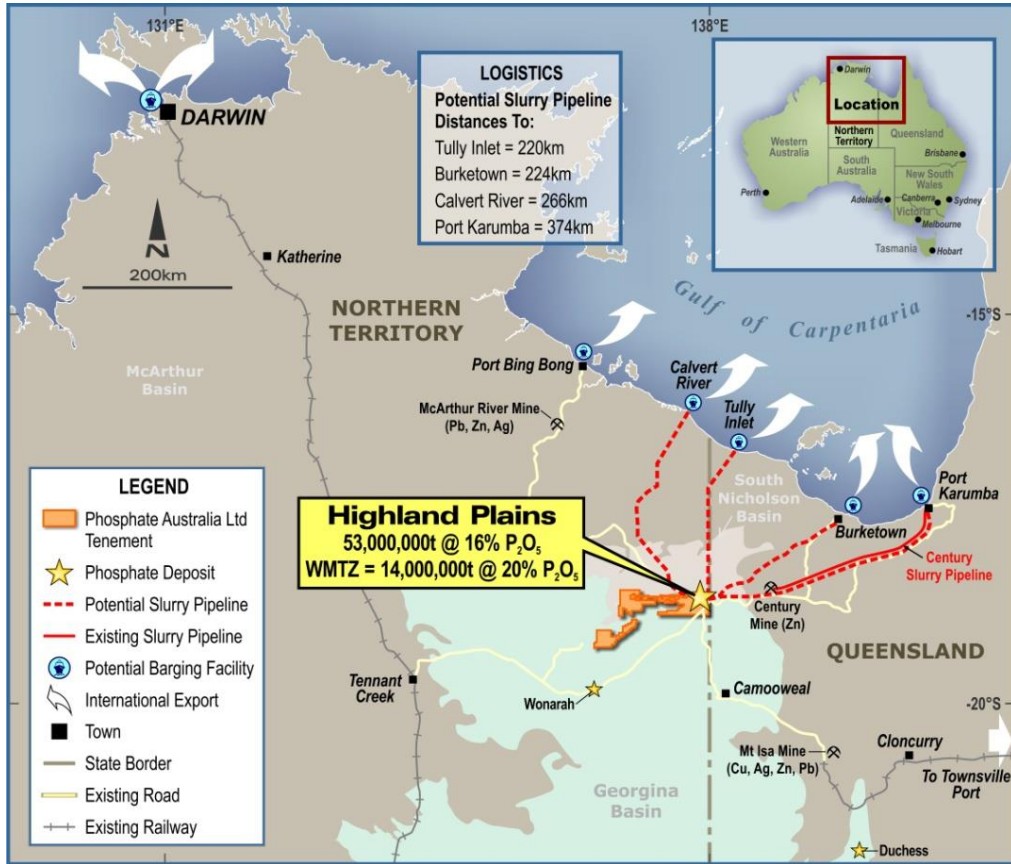
“ Multiple transport and logistics options

“ Other nearby POZ phosphate targets with a similar geological setting to Highland Plains

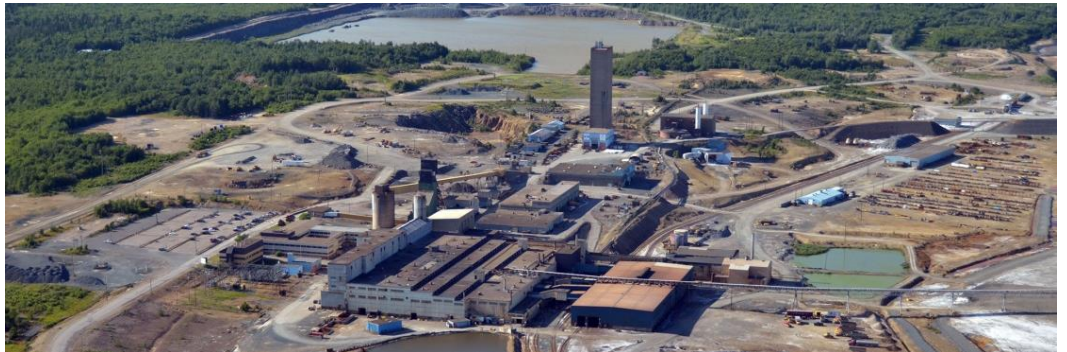
“ Phosphate Projects owned 100% by POZ with no private royalties



Highland Plains – Proximity to Century Mine Infrastructure



Century Zinc Mine Plant & Infrastructure



“The Century Zinc Mine is only 68km from Highland Plains.

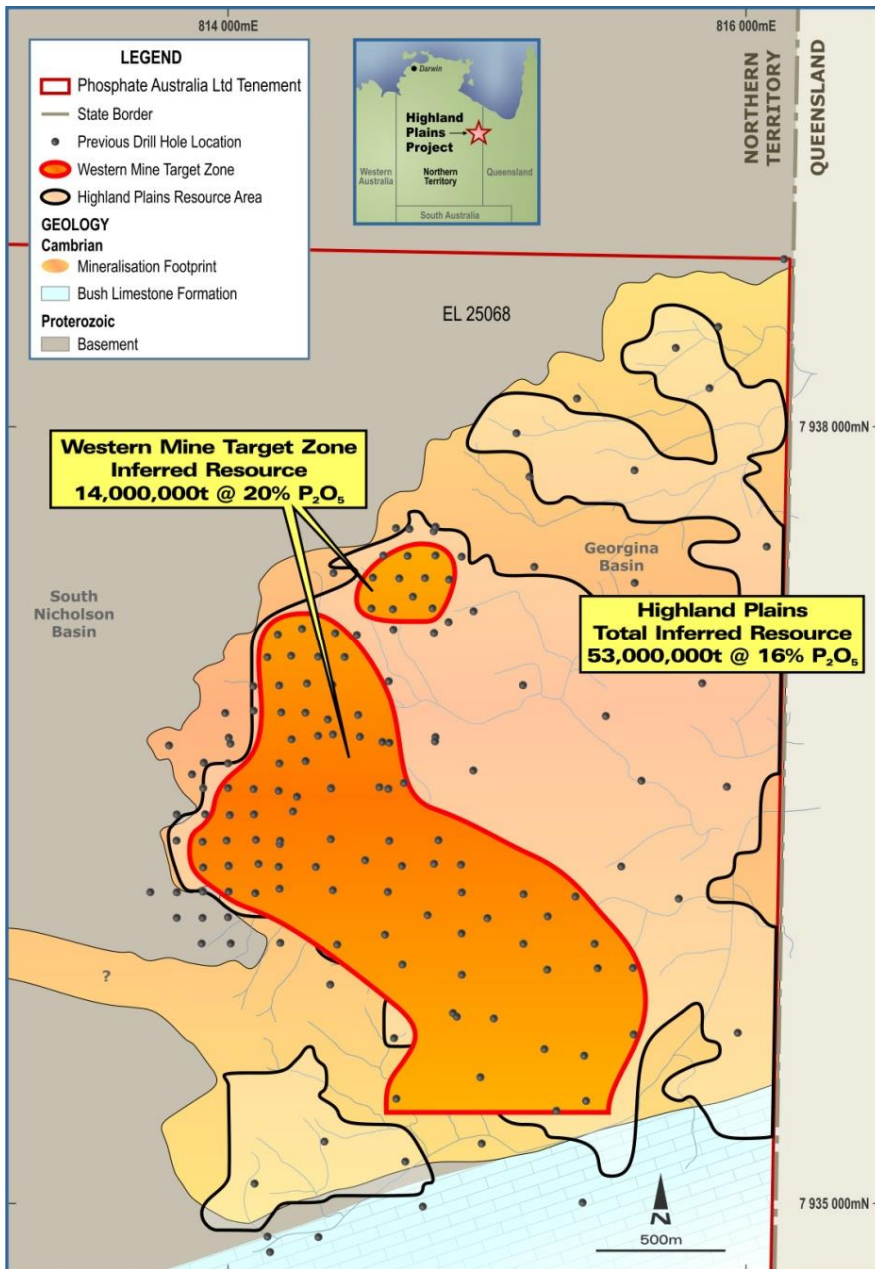
“Century has mains power, a beneficiation plant and a slurry pipeline to the coast at Port Karumba.

“At Port Karumba there are existing port facilities including slurry de-watering, bulk storage and operational barging.

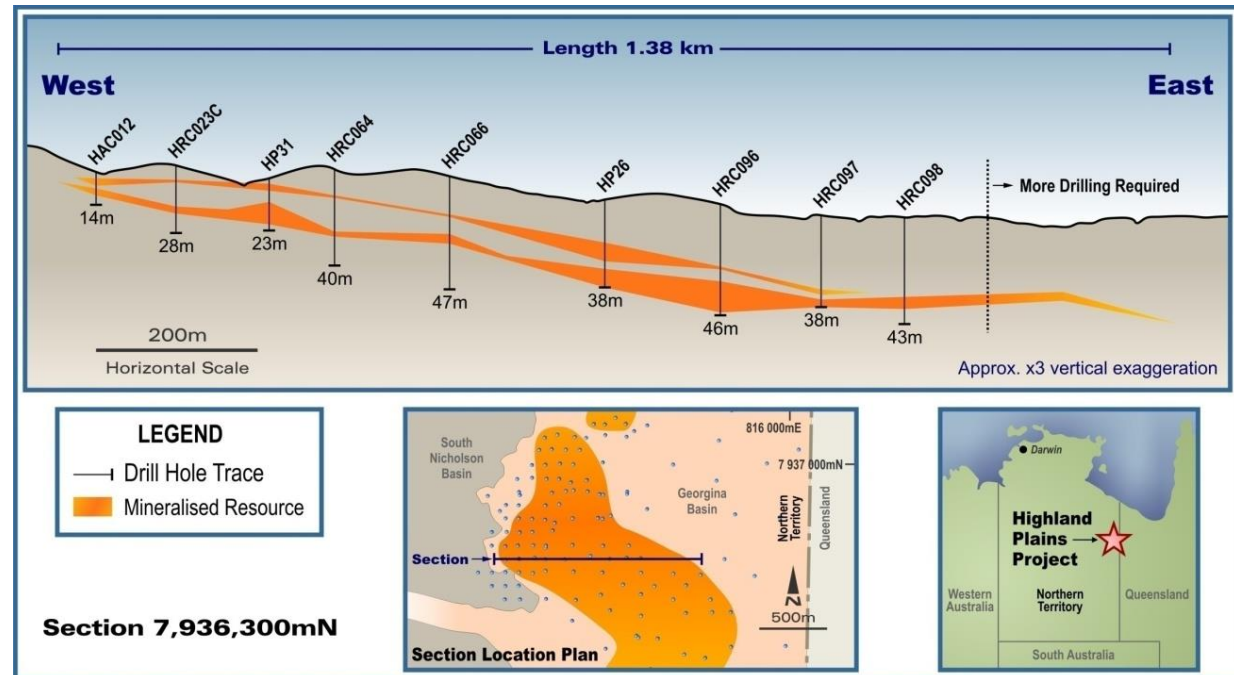
“Century has stated it will end all production in 2015.

“POZ is interested in utilising the Century infrastructure.

Highland Plains – Resource & Potential



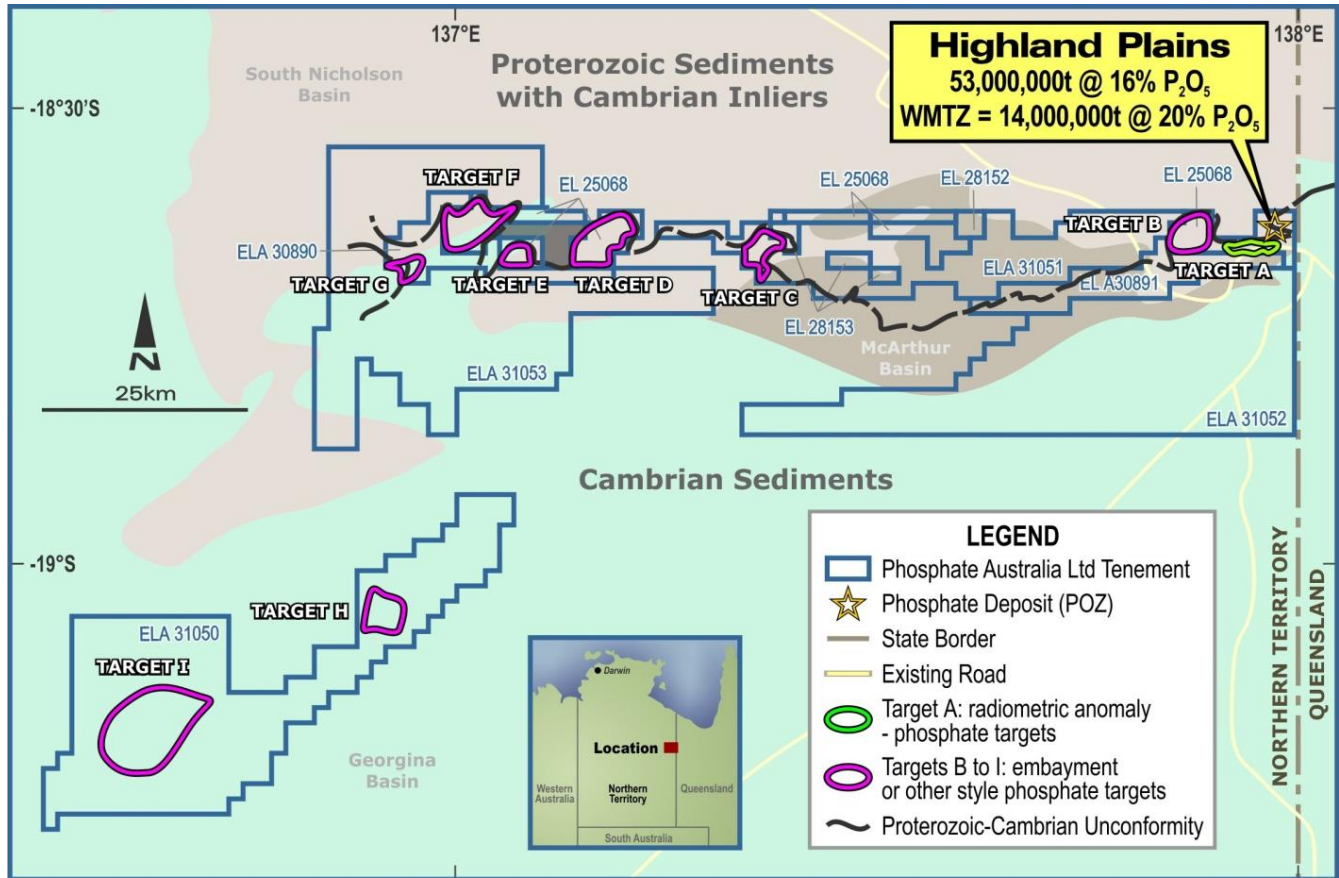
- ◆ Total JORC (2004) compliant Inferred Resource: **53 million tonnes at 16% P₂O₅** with a 10% P₂O₅ cut
- ◆ The Western Mine Target Zone (WMTZ) is shallower and has a higher grade JORC Inferred Resource of **14 million tonnes at 20% P₂O₅** with a 15% P₂O₅ cut (a sub-set of the Total resource)
- ◆ This resource was calculated by Perth based independent mining industry consultants Cube Consulting



Targeting Further Major Phosphate Deposits

- ◆ 3,299 km² of tenements prospective for phosphate deposits.
- ◆ Along strike targets (B to G) due west from Highland Plains in embayments following the Proterozoic unconformity. Same setting as the Highland Plains deposit.
- ◆ Phosphate embayment targets H & I from air photo interpretation
- ◆ Radiometric phosphate target (A) adjacent to Highland Plains

Regional Phosphate Drill Targets



- Positive metallurgical testwork results has established a method of beneficiation with excellent recoveries.
- Best flotation test to date gives a grade of **32.3% P₂O₅ (upgraded from 23.4% P₂O₅) at 76% recovery** of phosphate

Extensive laboratory flotation testwork has been carried out with a metallurgical flowsheet established

Table 1: Best Metallurgical Results to Date

		P ₂ O ₅ %	SiO ₂ %	Al ₂ O ₃ %	Fe ₂ O ₃ %	Recovery P ₂ O ₅ %
Test 1	Input Material	23.4	30.8	4.3	4.2	
	Coarse Fraction (>5 um)	37.4	6.3	0.5	0.7	53.1
	Coarse and Fine Fractions	32.3	12.3	4.3	1.8	75.8
Test 2	Input Material	25.6	26.2	3.9	4.1	
	Coarse Fraction (>5 um)	36.5	7.6	0.7	1.0	51.0
	Coarse and Fine Fractions	31.8	12.9	4.4	2.0	73.7



Highland Plains phosphate has low levels of the contaminants C, S, F, Cl, Cd & U

Minor Element Assays (average using 22.9% P₂O₅ cut off)

C %	S %	F %	Cl ppm	Cd ppm	U ppm
0.20	0.06	1.82	112	4	38

Minor element Lead values averaged 190ppm on selected samples (P₂O₅ grade of 14.9%). This anomalism generally occurs in parts of the base of the phosphate beds and could be mitigated through selective mining practices and/or metallurgical separation.

POZ Products from fines WHIMS testing. Iron rich residue on left. Samples to right are the non-magnetic fractions (phosphate rich)



Development Timeline	Year 1		Year 2		Year 3		Year 4	
	H1	H2	H1	H2	H1	H2	H1	H2
Source Strategic Partner/Funding								
Drilling To Increase Resource Base								
Mining Lease Application and Proceed To Grant								
Marketable Product To Potential Off-take Partners								
Metallurgical Feasibility Testwork & Pilot Plant								
Slurry Pipeline, Harging & Hydrographic Feasibility								
Permitting and Clearances								
Bankable Feasibility Study & Financing								
Project Construction & Commissioning								
First Production								

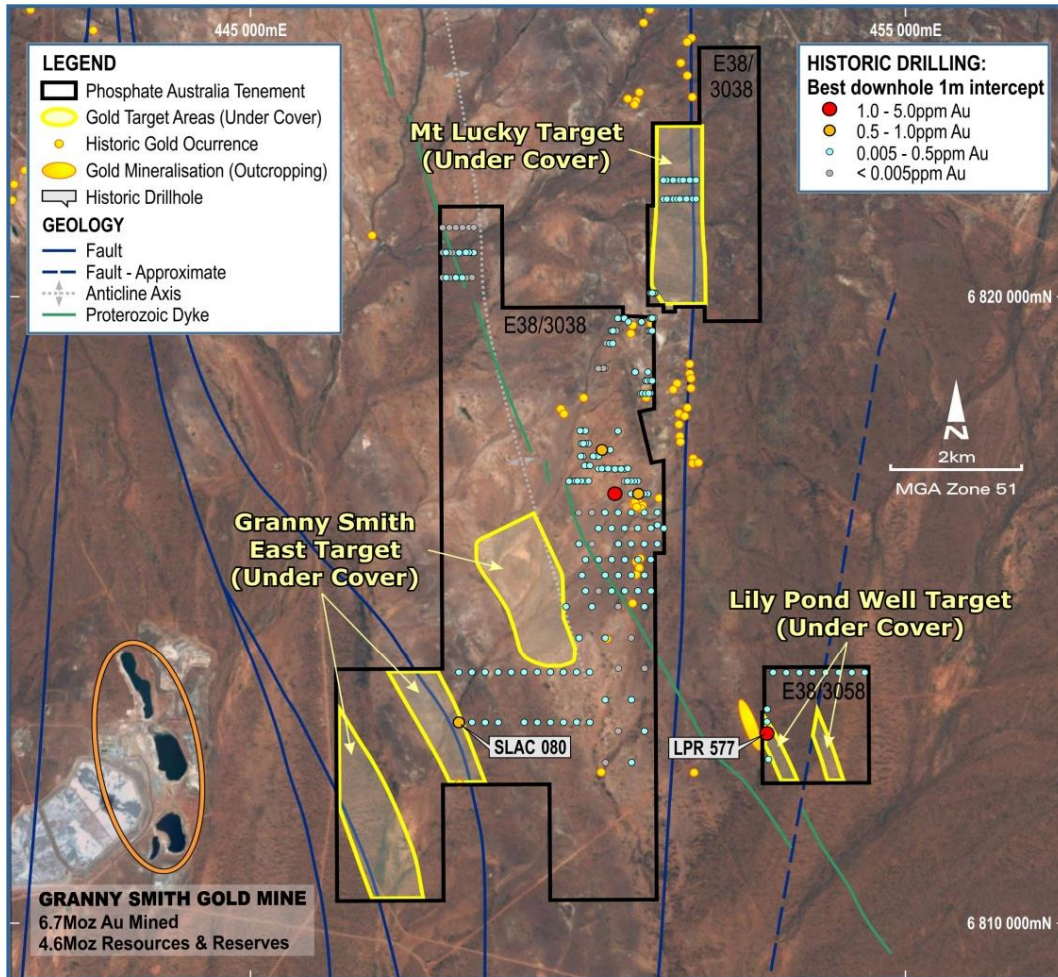


Current Price P₂O₅ - US\$121 or AS\$161.3/t for 32% P₂O₅ (70%BPL) FAS Casablanca (source - World Bank Oct 2015).
 Conversion A\$1.00=US\$0.75

Note

The proposed development timeline is conceptual in nature. The numbers are based upon in-house estimates by POZ management and are subject to change depending upon varying circumstances, including financing. These estimates should be independently verified before any investment decisions are made.





“100% interest acquired over 44.6 km² in the highly-endowed Laverton gold district.

“Targets 2.3km east from Granny Smith gold mine.

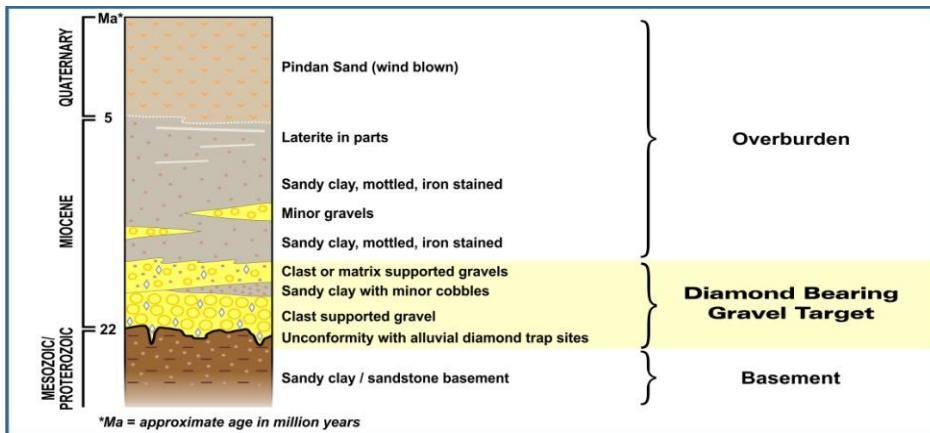
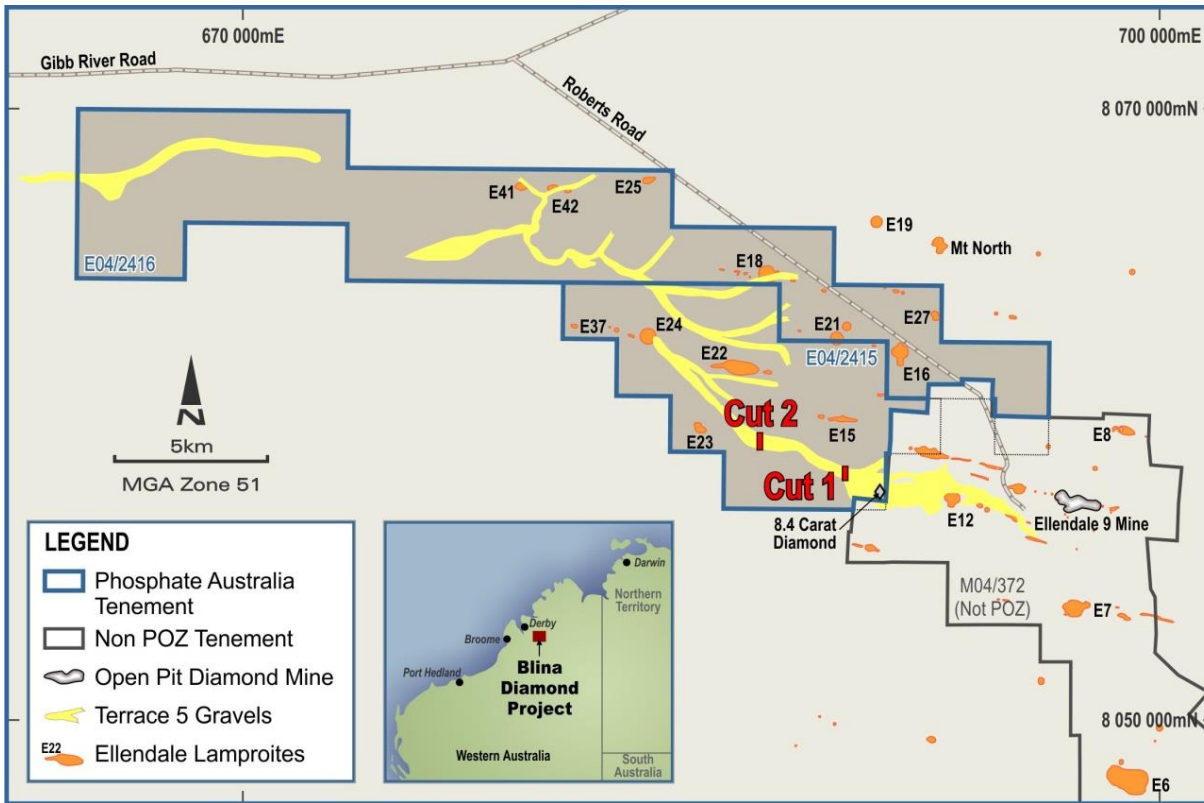
“Excellent low-cost opportunity for gold discovery near operating mill.

“Various under-cover gold targets identified.

“Field reconnaissance trip completed and main tenement granted.

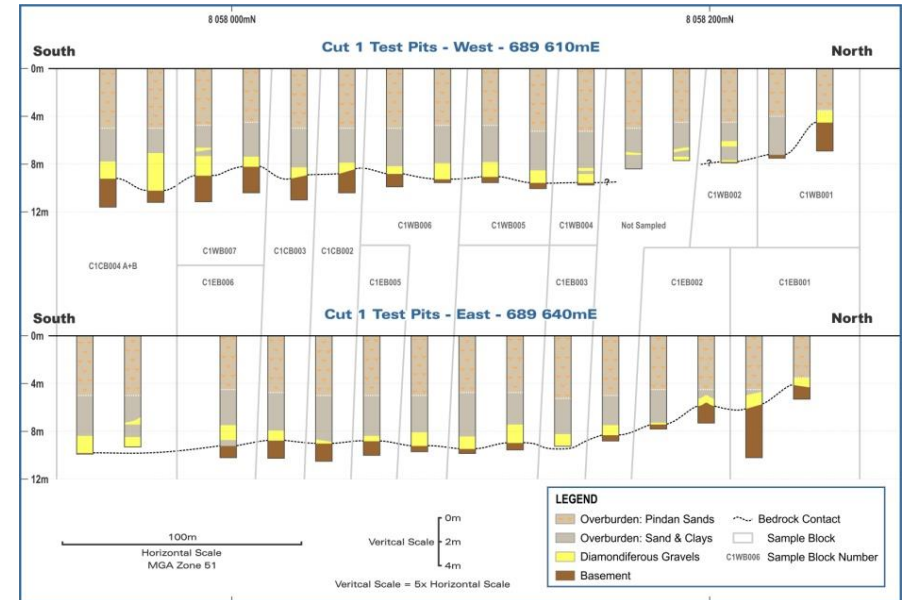
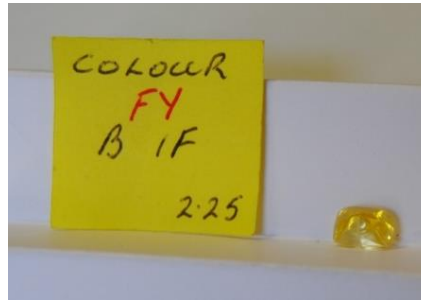
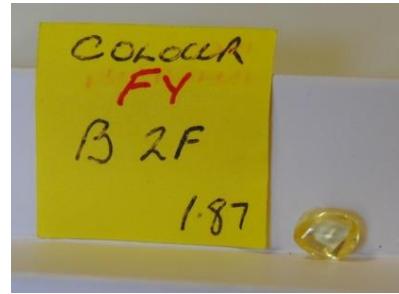
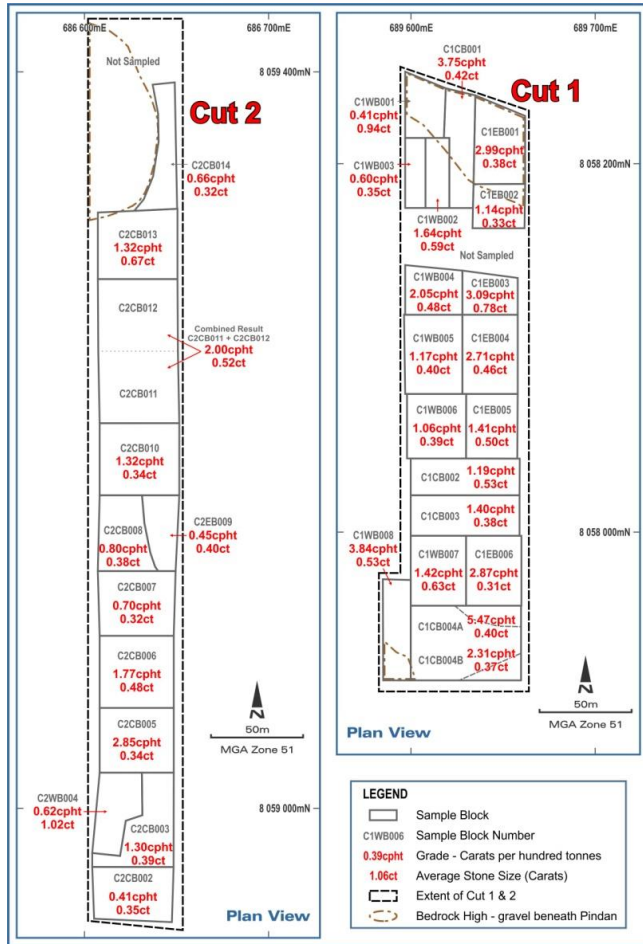
“Maiden drill program to commence later this month





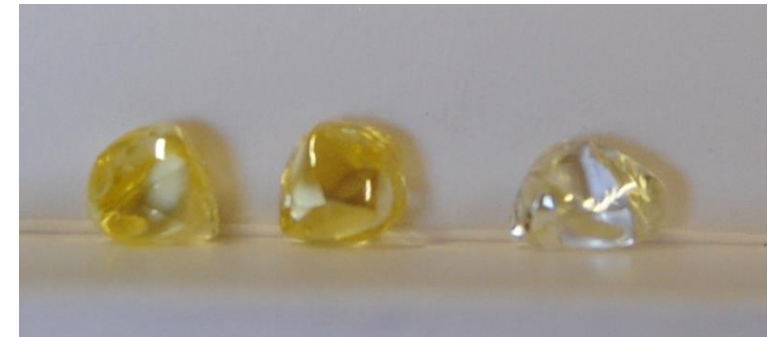
- “ Acquisition of 100% of the Blina Diamond Project in the Ellendale Region of Western Australia.
- “ Terrace 5 alluvial prospect includes historic bulk sampling of 40,613 cubic metres which recovered 1,432 carats of diamonds at a grade of 3.53 carats per hundred cubic metres and an average stone size of 0.42 carats. This included fancy yellow diamonds for which the Ellendale Field is renowned.
- “ 40km strike of diamondiferous Terrace 5 alluvial gravels to target.
- “ Diamond bearing lamproite pipes on acquired ground provide exploration upside.
- “ Purchase of a parcel of Ellendale rough diamonds to assist exploration.

Blina Diamond Bulk Sample Results

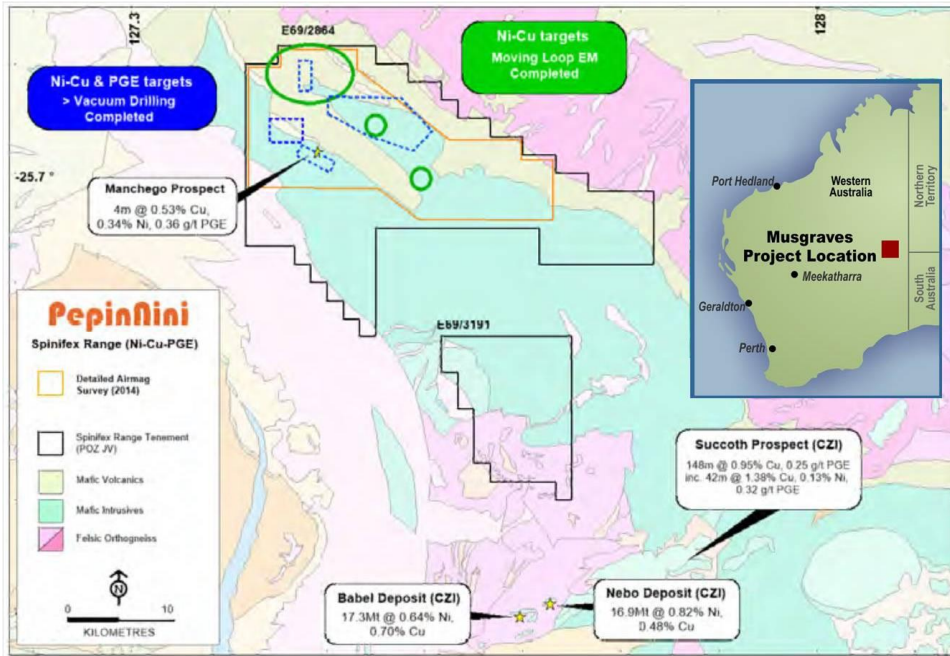


Cut	Volume (m³)	Tonnes (t)	Size Distribution*		Number Diamonds	Total Carats	Average Size (ct)	Grade ct/100m³	Grade ct/100t	Largest Diamond ct
			+3.35mm	-3.35mm						
C1	22,006	40,445	676	1,698	2,363	959.2	0.41	4.36	2.37	5.92
C2	18,607	31,605	336	757	1,093	472.3	0.43	2.71	1.49	7.00
Total	40,613^A	72,050	1,012	2,455	3,456	1,432	0.42	3.53	2.00	7.00

Diamonds shown were mined from the adjacent Ellendale Mining Lease and represent the type of high quality rough being targeted by POZ

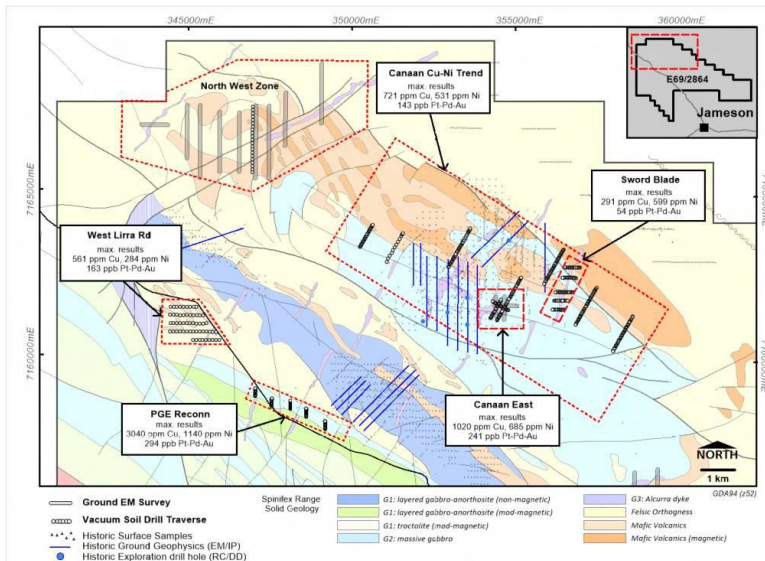


Musgrave Cu-Ni-V-PGE Project, WA (in JV)



“ Reconnaissance vacuum regolith drilling of prospective nickel-copper sulphide and PGE targets completed. Six hundred and twenty two (622) vertical holes were drilled using the PepinNini's vacuum drill rig to an average depth of 5.1m for a combined total of 3,170m.

“ Five prospect areas returned vacuum soil samples with anomalous geochemical results. Evaluation is ongoing.



Phosphate Australia Limited (ASX: POZ)

An Australian focused multi-commodity resources company

Contact Details:

YAXI ZHAN - Commercial Manager +61 8 9422 9503

Email - Info@phosphateaustralia.com.au
www.phosphateaustralia.com.au



Phosphate Australia Limited



August 2015