

Phosphate Australia's projects include:

- ◆ Musgrave Project WA, Ni-Cu-PGEs: Manchego Prospect Phase 2 drill results pending. Joint Venture with Anglo American, POZ 30% free carried.
- ◆ Highland Plains Phosphate Project, Northern Territory. An inferred resource of 53 million tonnes at 16% P₂O₅. POZ 100%.
- ◆ Tuckanarra Gold Project in the Murchison of WA: JORC Resource.



Disclaimer and Competent Persons

This presentation is an overview of the Company prepared with good intention. It is not a prospectus and offers no securities for subscription or sale in any jurisdiction, nor a securities recommendation.

All information necessary for investment decisions is not contained herein and investors are encouraged to conduct their own research of Phosphate Australia Limited in conjunction with legal, tax, business and financial consultation.

Phosphate Australia Limited, its directors, officers, employees and agents disclaim liability for any loss or damage suffered by reliance on information contained in this report when making investment decisions. In addition, no express or implied representation or warranty is given in relation to the completeness and sufficiency of the information, opinions or beliefs contained in this document or any other written or oral information made or to be made available to any interested party or its advisors.

This presentation may refer to the intention of Phosphate Australia Limited but it does in no way intend to forecast forward looking statements or future matters for the purposes of the Corporations Act or any other law. Future events are subject to risks and uncertainties, and as such results, performance and achievements may in fact differ from those referred to in this presentation. With the exception of fraud, no liability is accepted for any loss, cost or damage suffered or incurred by the reliance on the sufficiency or completeness of the information, opinions or beliefs contained forthwith.

Research, evaluation and analysis of the business, data and property are encouraged before making financial investments. Any estimates, projections or opinions contained herein may involve subjective judgment, analysis and interpretation, and satisfaction of ones own decisions should be undertaken. We caution you not to place undue reliance on our forward-looking statements, which speak only as of the date of this presentation, and we undertake no obligation to update this information.

The information in this presentation that relates to Exploration Results, Mineral Resources or Ore Reserves is based on information compiled by Mr Jim Richards who is a Member of The Australasian Institute of Mining and Metallurgy. Mr Richards is a Director of POZ. Mr Richards has sufficient experience which is relevant to the style of mineralisation and type of deposit under consideration and to the activity he is undertaking to qualify as a Competent Person as defined in the 2004 Edition of the Australasian Code for Reporting of Exploration Results, Mineral Resources and Ore Reserves. Mr Richards has consented to the inclusion in this presentation of the matters based on information in the form and context in which it appears.

The resource estimations for the Tuckanarra Gold Project Area deposits, including the Anchor, Bollard, Cable, Drogue, Maybelle, Maybelle North and Miners Dream deposits, were also carried out by Mr Craig Harvey utilizing resource drilling data sets provided by Phosphate Australia Limited. Mr Harvey is a Principal Consultant with Ravensgate Mining Industry Consultants and is also a Member of the Geological Society of Southern Africa. Mr Harvey has sufficient experience which is relevant to the style of mineralisation and type of deposits under consideration and to the activity undertaken to qualify as a Competent Person as defined in the 2004 Edition of the 'Australasian Code for Reporting of Exploration Results, Mineral Resources and Ore Reserves'. Mr Harvey also consents to the inclusion in the report of the resource estimation matters for these deposits based on the reporting information in the form and context in which it appears.

Board Of Directors

*Executive Chairman:
Jim Richards*



*Non-Executive Director
& Company Secretary:
Grant Mooney*



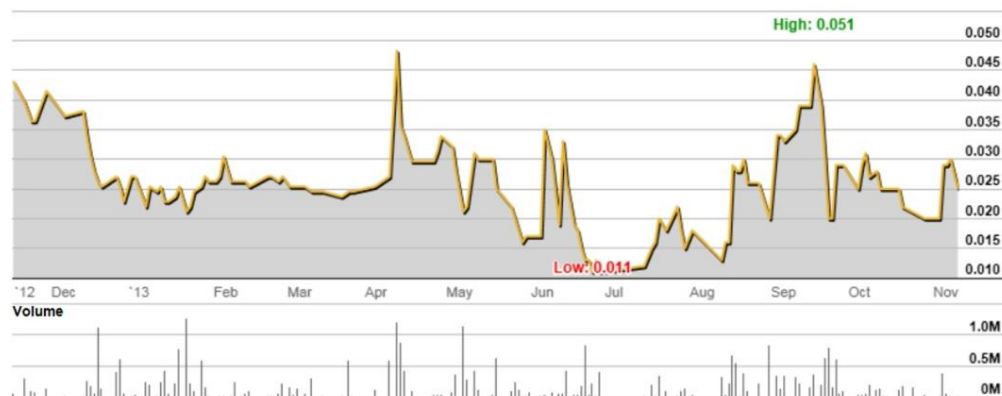
*Non-Executive
Director:
Mark Thompson*

Total Shares on Issue	161,168,333
Options on Issue (\$0.06 to \$0.20 strike)	7,350,000
Market Capitalisation (undiluted at \$0.025 per share)	\$4.0 M
Cash on Hand (end Q1 Sept 2013)	\$2.0 M

Major Shareholders

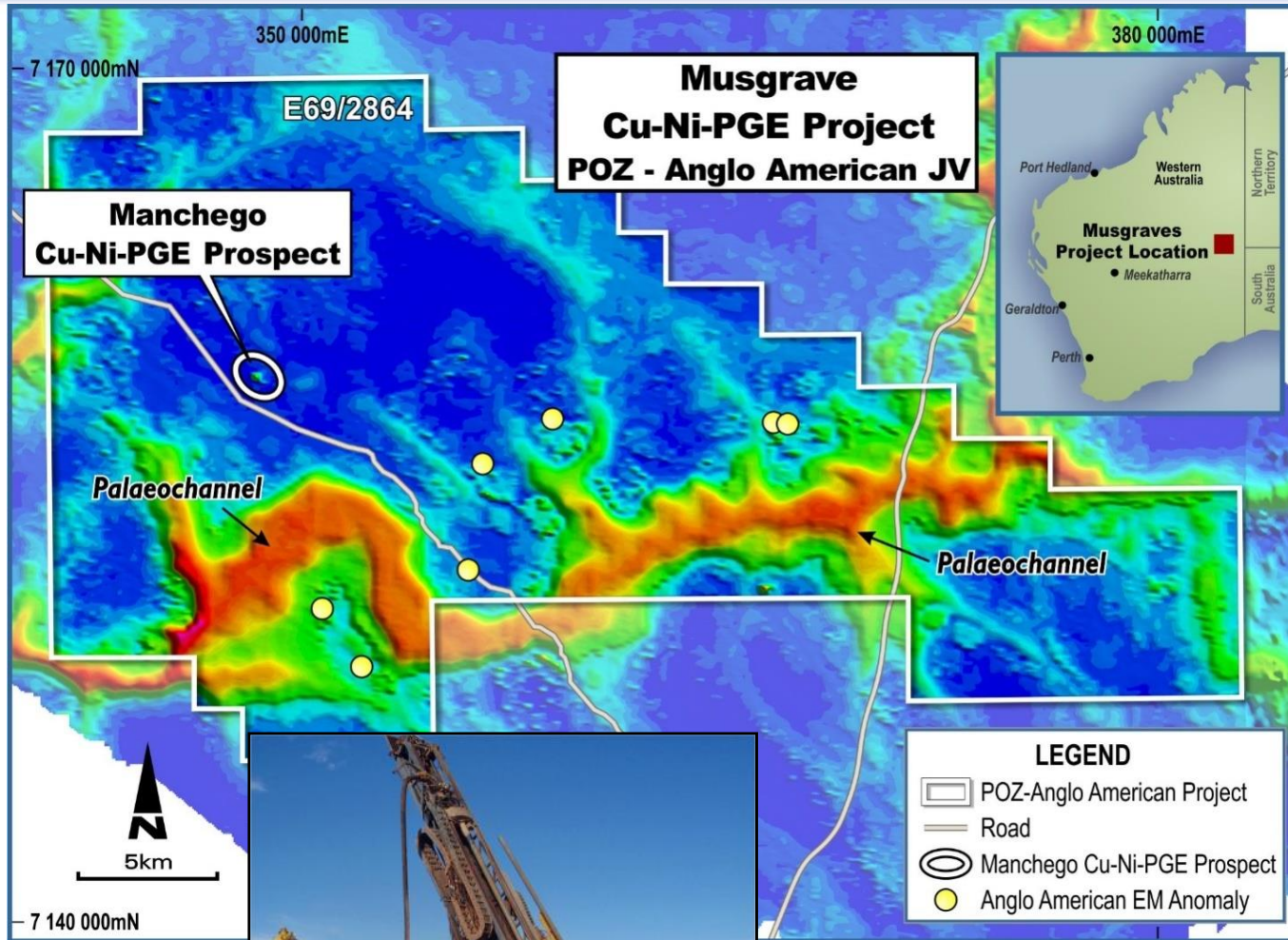
Holder	Shares	% of Capital	Options
Directors	34,462,500	21.4	6 million
Michael Ruane	16,734,110	10.4	nil
Lodestone Equities	11,000,000	6.8	nil

Share Price History – 12 Months





Musgrave Project (WA): E69/2864, Anglo American Farm In, POZ 30% Free Carried



Manchego Drilling: Left to right; POZ geologist Michael Denny, POZ Chairman Jim Richards, Anglo American Senior Geologist Paul Polito.

- “ POZ in a farm-in agreement with **Anglo American** over tenement E69/2864 (619km²)
- “ POZ 30% free carried to BFS
- “ Targeting magmatic Cu-Ni-PGE sulphide deposits
- “ **Manchego Cu-Ni-PGM Prospect** identified during an extensive regional airborne EM survey and follow up drill program
- “ Initial drilling at Manchego has identified a significant Cu-Ni-PGE mineralised system.
- “ A Phase 2 drilling program recently completed. Assay results pending

Phase 1 Drill Results

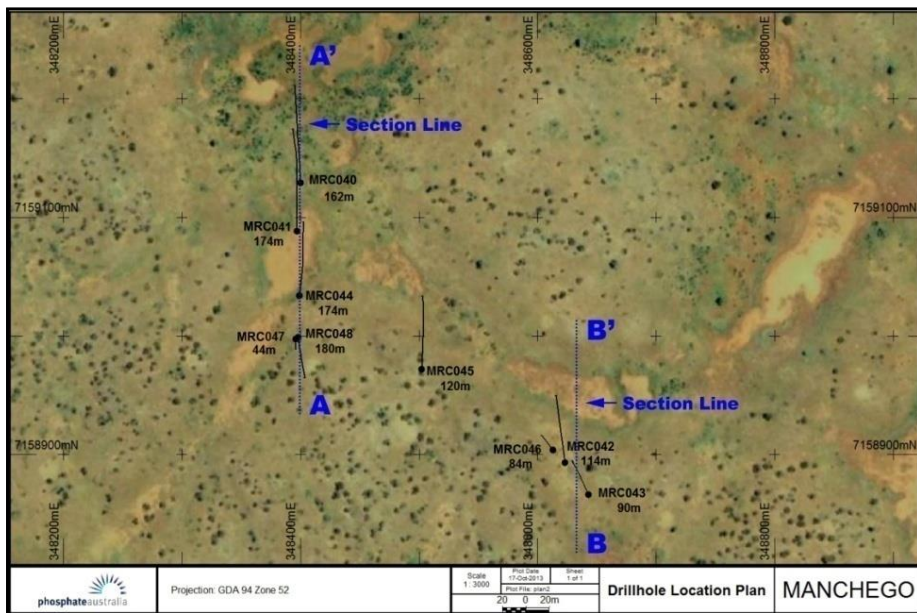
- Drill results include MRC 042 with **24m @ 0.27% Cu** from 66 metres, including **5m @ 0.54% Cu, 0.11% Ni** and **0.28 ppm Pt+Pd+Au** from 71 metres.
- Grades up to **1.65% Cu** over 1 metre from 71 metres

Phase 2 Drill Results Pending

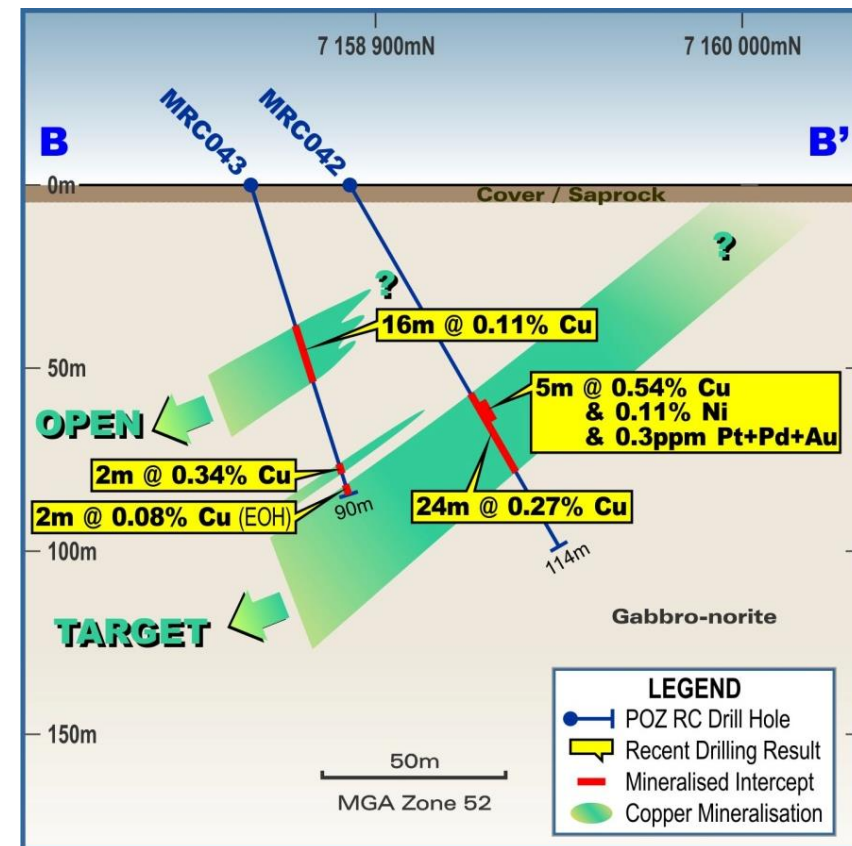
- 1,198m Phase 2 RC drilling recently completed: assays pending



Manchegeo Phase 1 drilling: RC Drill Chips from MRC 040 (74-75m) showing sulphide mineralisation within gabbro-norite host

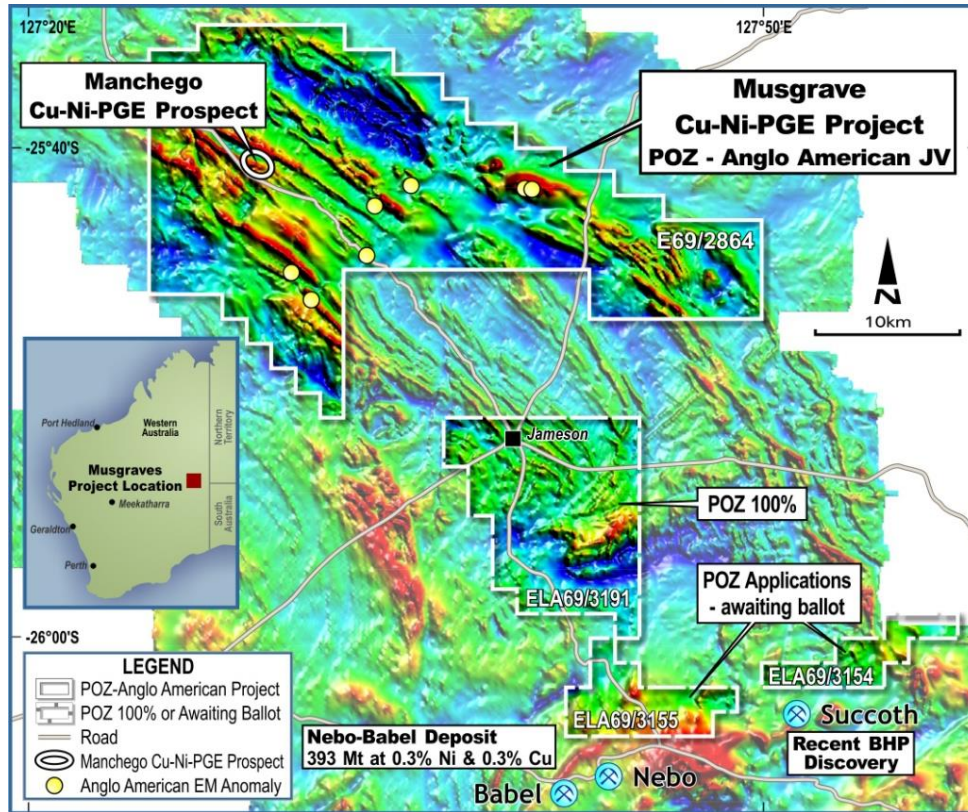


Manchegeo plan view with drilling and section lines



Manchegeo Section View

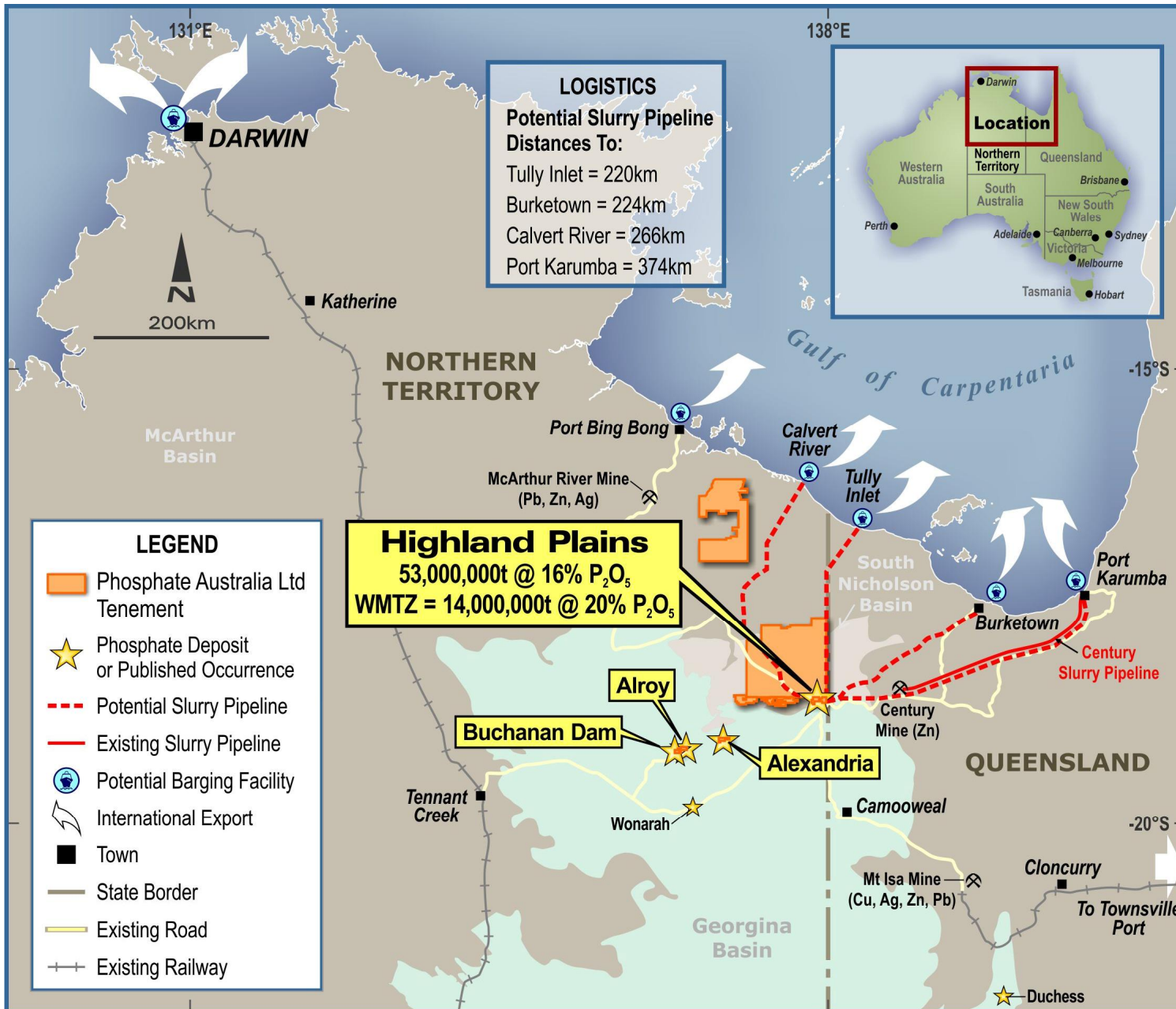
Musgrave Region (WA): Other POZ Projects



POZ Executive Chairman Jim Richards sampling PGE-magnetite outcrop on POZ permit ELA69/3155: four samples averaged 2.4g/t PGE+Au (Pt :Pd 3:1)

- “ The BHP Billiton Ltd controlled Nebo-Babel deposit (393 Mt at 0.3% nickel and 0.3% copper) remains the most significant discovery in the Musgrave region to date
- “ Succoth copper discovery by BHPB recently reported in the media
- “ POZ has a 100% interest in permit ELA 69/3191 (167km²)
- “ POZ ELA 69/3191 prospective for PGE_s and Ni-Cu. PGE assays at surface of up to 3.4 g/t (mainly platinum), 10_s of km of strike potential
- “ POZ has applied for ELA_s 69/3154 (49km²) and 3155 (34km²) and is one of multiple applicants for the tenements that will be decided by ballot. These two permits are proximal to the BHP Nebo/Babel deposit and the new Succoth discovery

Highland Plains – Phosphate Project Location



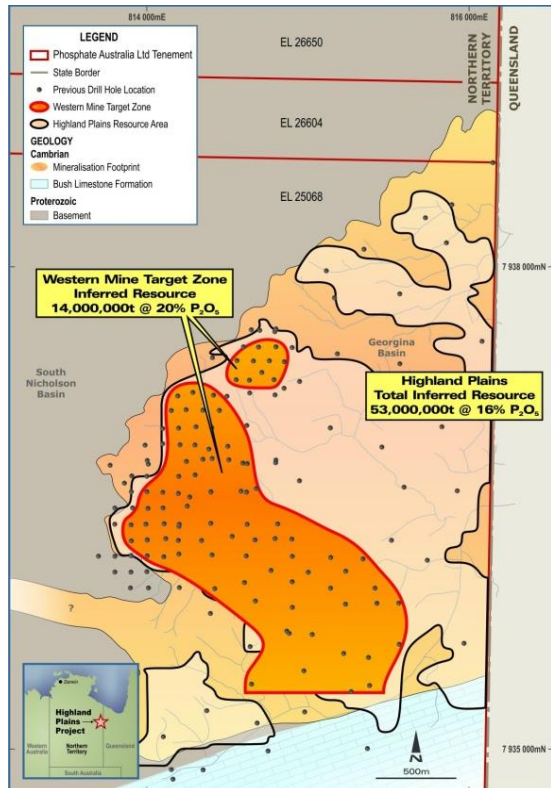
“ Phosphate Project at Highland Plains in the NT has a JORC Inferred Resource of **53,000,000 tonnes @ 16% P₂O₅**

“ Transport Solution: 3 million tonnes per annum slurry pipeline initiative. Scoping study transport costs from **A\$2.06 to \$3.69 per tonne**

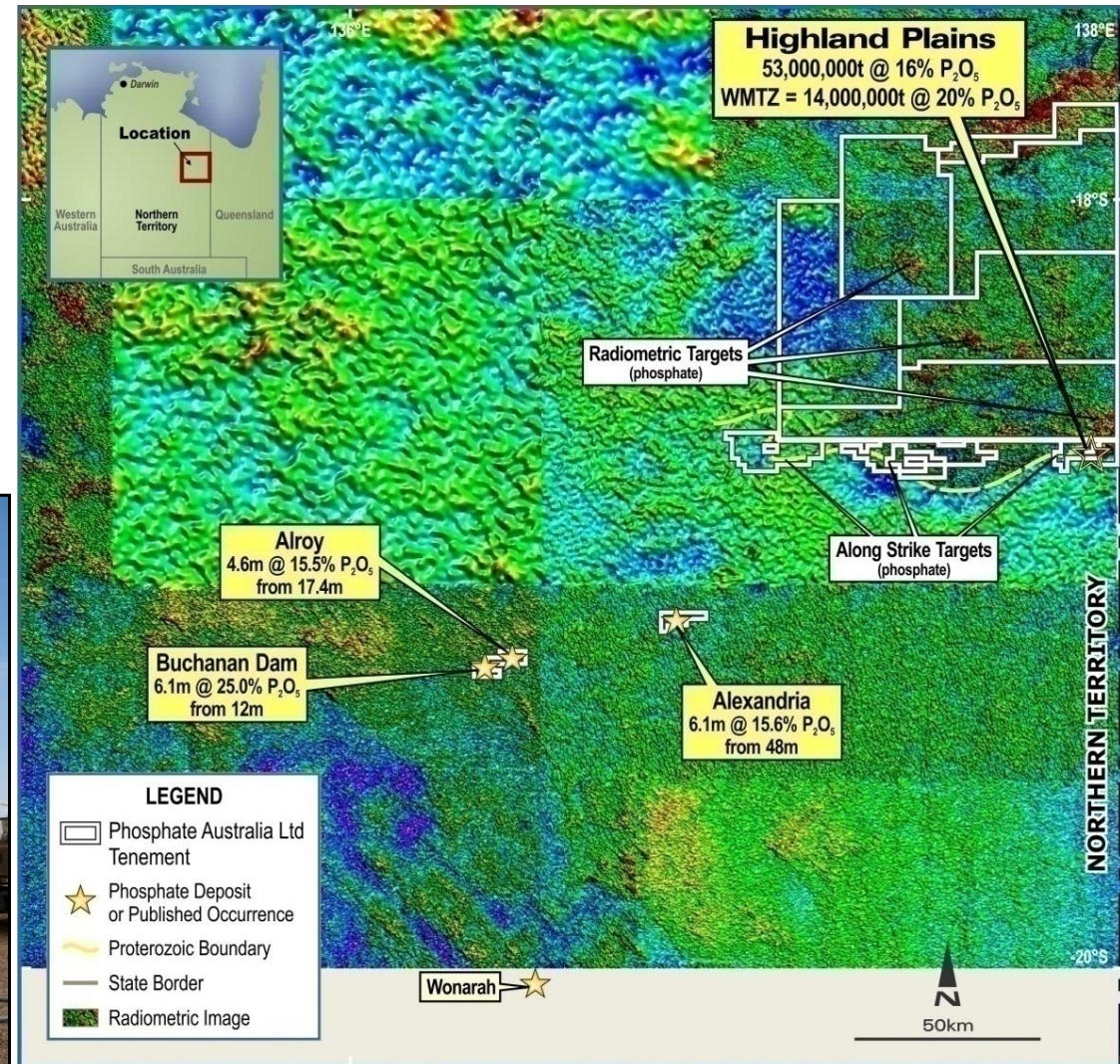
“ Project owned 100% by POZ with no private royalties

Highland Plains – Resource & Potential

- “ Along strike potential for further discoveries to the west of Highland Plains, permitting in place to drill
- “ Further exploration assets requiring follow up drilling include historic drill hits of:
 - “ Alexandria . **6.1m @ 15.6% P₂O₅** from 48.8m
 - “ Alroy . **6.4m @ 12.0% P₂O₅** from 16.2m
 - “ Buchanan Dam . **6.1m @ 25% P₂O₅** from 12.2m



Highland Plains Phosphate Deposit



Other Prospects: Radiometric image of POZ Prospect Areas. Note anomalous areas north and west of Highland Plains

Metallurgy

- “ High Grade End Product: extensive flotation testwork has resulted in grades of **32.3% P_2O_5** at 76% recovery from the coarse and fine fractions.
- “ Low levels of carbon, sulphur, fluorine, cadmium and uranium

Highland Plains flotation testwork



Logistics

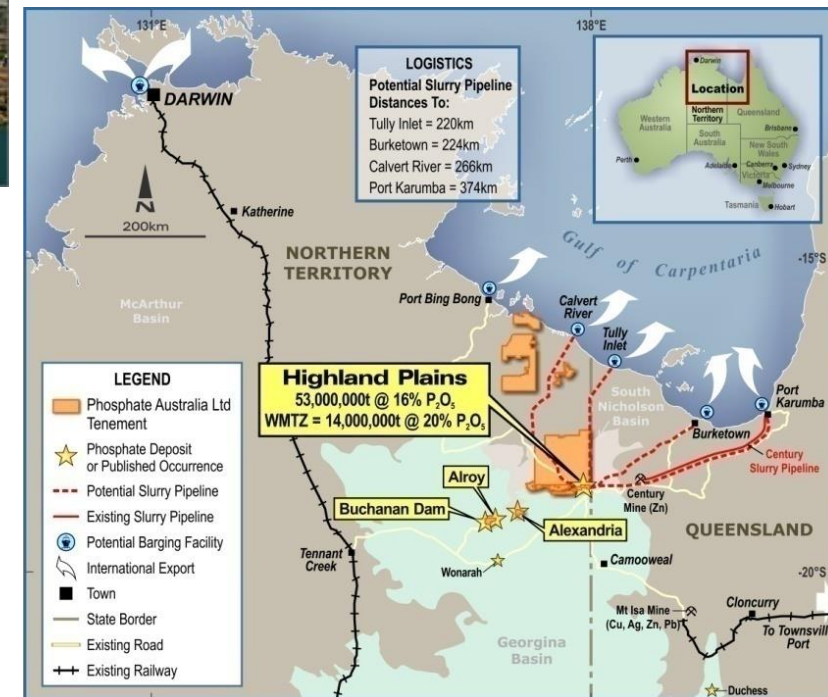
Slurry Pipeline – Mine to Coast

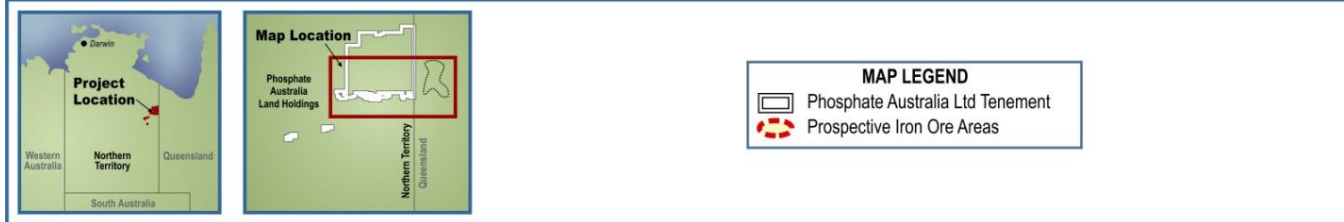
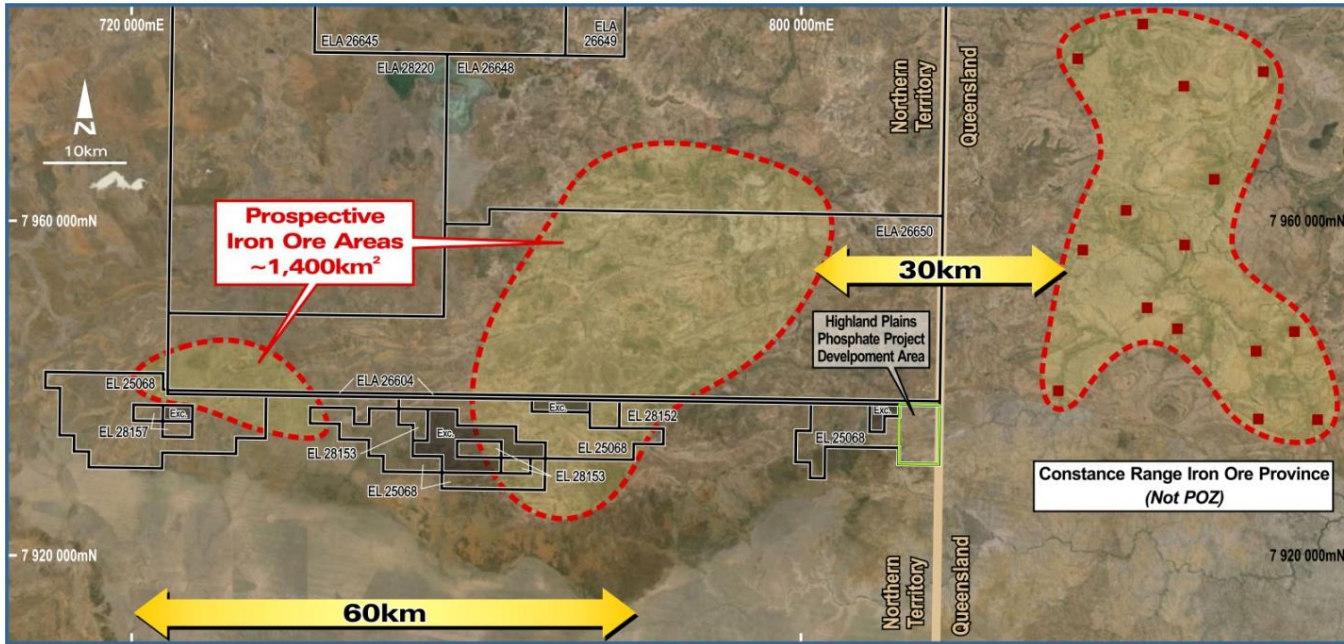
- ✓ CAPEX estimates vary from \$184M to \$226M (AUD)
- ✓ OPEX estimates range \$2.06/t to A\$3.69/t for 2-3 Mtpa production
- ✓ Hydro-geology investigations indicate ample water

Port Karumba



Port Bing Bong





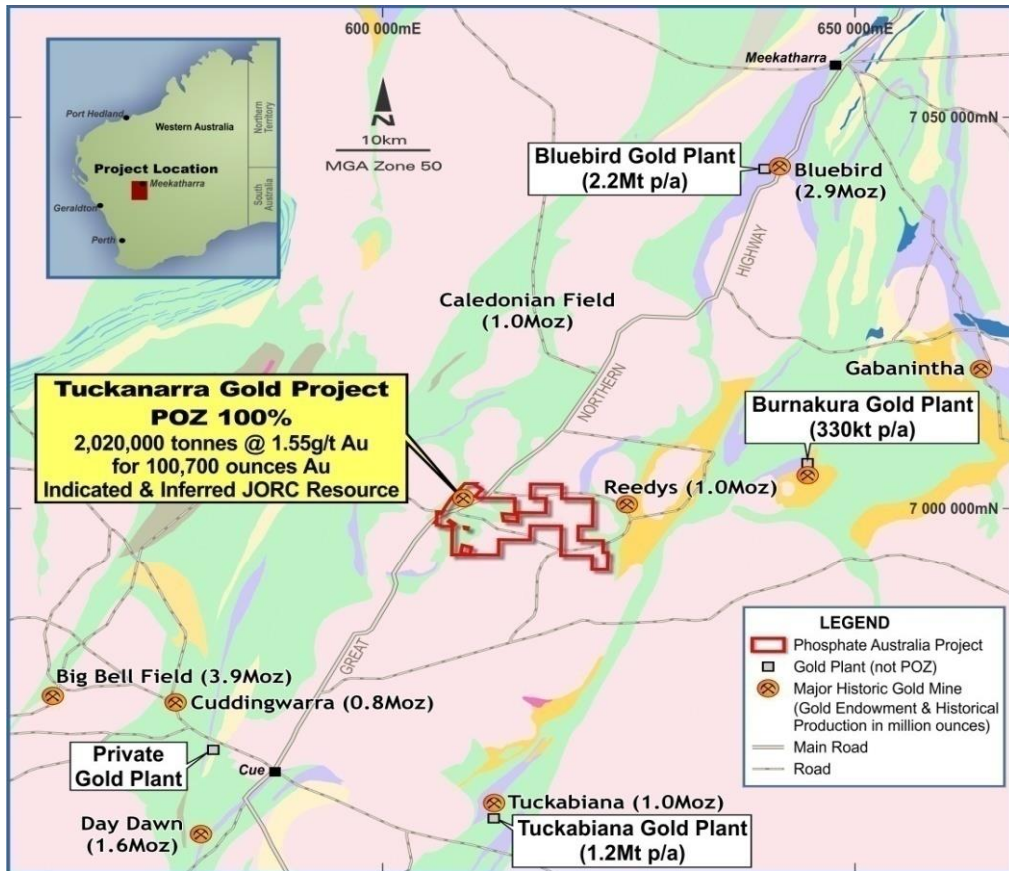
Iron Ore prospect: terrain and sampling; grades up to 63.7% Fe



Nicholson Iron and Manganese Project (NT)

- “ Large area of **1,300 km²** prospective for Clinton-style oolitic iron mineralisation.
- “ Iron ore exploration was conducted in the nearby Constance Range area in Queensland in the early 1960s by BHP.
- “ POZ has conducted initial helicopter reconnaissance and mapping work and has confirmed the presence of multiple iron rich bodies with sampled grades up to **63.7% Fe** (5.1% SiO₂, 1.79%Al₂O₃ and 0.04% P).
- “ Joint Venture Option Agreement with Jimpec Pty Ltd earning 80% of the iron and manganese rights by payment of \$1.5m to POZ and expenditure of \$1.5m on the project.
- “ Large size potential for the iron project in this under-explored province.

Tuckanarra Gold Project (WA)



- “ 100% interest in the historic Tuckanarra Gold Project in the central Murchison, WA. No private royalties
- “ Maiden Indicated and Inferred JORC resource of: **2,020,000 tonnes at a grade of 1.55 g/t Au for 100,700 ounces of gold at 0.25g/t Au lower cut off**

Resource Category	Tonnes	Grade (g/t)	Ounces Au
Indicated	1,091,000	1.60	56,000
Inferred	929,000	1.50	44,700
Total	2,020,000	1.55	100,700

- “ Pit design and permitting underway
- “ Excellent initial metallurgical recoveries of between 94.7% and 99.3% gold (75 micron grind, 48 hour cyanide bottle rolls)
- “ Situated centrally within the Murchison goldfield with nearby gold plants at Burnakura (40 km), Bluebird (58km on highway) and Tuckabiana (73 km, highway and haul road) . potential for toll treatment



Drilling at Cable Open Pit



Bollard Open Pit

Contact: Executive Chairman - Jim Richards
08 9422 9555
37 Colin St, West Perth, WA 6005
www.phosphateaustralia.com.au